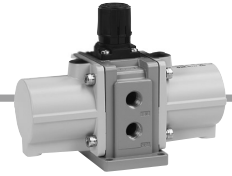


Booster Regulator Series 25A-VBA



How to Order



25A - VBA 40A - [] 04 []

Series compatible with secondary batteries

Body size	Pressure increase ratio
10A	1/4", Handle-operated type
20A	3/8", Handle-operated type
40A	1/2", Handle-operated type

Pressure increase ratio: Twice

Thread type ^{Note)}

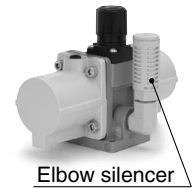
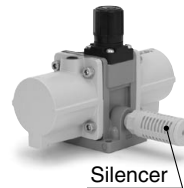
Symbol	Thread type
Nil	Rc
F	G
N	NPT
T	NPTF

Note) Thread types apply to the IN, OUT, and EXH ports of the VBA10A and to the IN, OUT, EXH, and gauge ports of the VBA20A and VBA40A. The gauge ports of the VBA10A are Rc thread type regardless of the thread type indication.

Option

Symbol	Option
Nil	None
N	Silencer
S	High-noise reduction silencer ^{Note)}
LN	Elbow silencer ^{Note)}
LS	Elbow high-noise reduction silencer ^{Note)}

Note) Refer to "Combination of Thread Type and Options." Pressure gauge is not available as an option.



Port size

Symbol	Port size	Applicable series
02	1/4"	VBA10A
03	3/8"	VBA20A
04	1/2"	VBA40A

Combination of Thread Type and Options

Body size	Thread type	Option					Semi-standard
		Nil	N	S	LN	LS	Nil
10A	Nil	●	●	●	●	●	●
	F	●	●	●	●	●	●
	N	●	●	—	●	—	●
	T	●	●	—	●	—	●
20A	Nil	●	●	●	/	/	●
	F	●	●	●			●
	N	●	●	●			●
	T	●	●	●			●
40A	Nil	●	●	●	/	/	●
	F	●	●	●			●
	N	●	●	●			●
	T	●	●	●			●

⚠ Caution

- Not compatible with a low dew point
- VBA10A: Due to the close proximity of the IN and OUT sides of the gauge port and the handle of the booster regulator, a G43-10-01-X300/G46-SRB pressure gauge cannot be mounted as it will interfere with the handle.
VBA20A/40A: The G43-10-01-X300/G46-SRB pressure gauge cannot be mounted as the mounting pitch of the IN and OUT sides of the gauge port of the booster regulator is smaller than the diameter of the pressure gauge. In order to mount the pressure gauge, piping which does not cause any interference must be prepared separately.

Air Tank Compatibility Chart

Booster regulator	25A-VBA10A	25A-VBA20A	25A-VBA40A
Air tank			
25A-VBAT05A1	●	—	—
25A-VBAT05S1	●	—	—
25A-VBAT10A1	●	●	—
25A-VBAT10S1	●	●	—
25A-VBAT20A1	—	●	●
25A-VBAT20S1	—	●	●
25A-VBAT38A1	—	●	●
25A-VBAT38S1	—	●	●

* Refer to page 141 for details on air tanks.

* Specifications and dimensions for the 25A-series are the same as standard products.

Air Tank

Series 25A-VBAT

RoHS

How to Order



- For the booster regulator, use the 25A-VBA.
- It can be used alone as a tank.

**Standard product
(For Japanese market)**

Note) The thread type for each port is Rc.

25A - VBAT 10 A 1

Tank internal capacity

Symbol	Internal capacity
05	5 L
10	10 L
20	20 L
38	38 L

Material

Symbol	Material
A	Carbon steel (SS400)
S	Stainless steel

Note 1) Order drain valve (VBAT-V2) separately.

Note 2) Safety valve is not available as an option.

- Series compatible with secondary batteries

⚠ Caution

- When used as a single unit (not connected with a booster regulator) and pressurized at over 1 MPa at normal temperatures, the air tank falls under the scope of the “High Pressure Gas Safety Act” in Japan.

* Specifications and dimensions for the 25A-series are the same as standard products.