

Pressure Gauge for General Purpose

Series G15/G27

RoHS



G15-10-01



G27-10-R1

- Be sure to read the precautions on page 739 for selection and mounting.

Standard Specifications

Model		G15	G27
Type		Back side thread	
Port size ⁽¹⁾		R 1/8: M5 (Female thread)	R 1/8
Fluid ^{(2) (3)}		Air	
Indication precision ⁽⁴⁾		±5% F.S. (Full span)	
Material	Case (Surface treatment)	Zinc die-casted (Black graphite coated)	
	Clear cover	Polycarbonate	
	Stud (Surface treatment)	Zinc die-casted (Black graphite coated)	
	Bourdon tube	Brass	
Weight (kg)		0.01	0.015

• Caution on handling: When drain or oil, etc. gets into the gauge, it may result in a malfunction.

Note 1) When mounting a pressure gauge, use caution not to tighten excessively. Excessive tightening will cause product to be damaged. Use a pipe tape for sealing. Recommended tightening torque is between 3 to 4 N·m for R 1/16 and 7 to 9 N·m for R 1/8.

Note 2) Water cannot be used as an operating fluid. Because the clearance gap of the air passage of the Bourdon tube is very small. Water will block the gap and cause a malfunction.

Similarly, when using other fluids, please consult with SMC for fluid compatibility information concerning possible corrosion and response delay, etc.

Note 3) Avoid freezing as this may cause a malfunction.

Note 4) The guaranteed temperature range is 23°C ±5°C.

Model (Standard)

Model	Pressure range ⁽¹⁾	Indication unit	Connection thread
	MPa		
G15-10-01	0 to 1.0	MPa	R 1/8, M5 (Female thread)
G27-10-R1	0 to 1.0	MPa	R 1/8

Note 1) Do not apply more excessive pressure than max. pressure display. It will be a cause of malfunction.

Model (Made to Order)

Other versions of this unit can be made on a Made-to-Order basis.

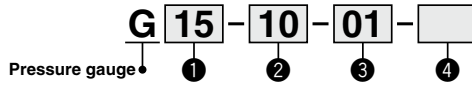
Please consult with SMC for details, as delivery times may be extended.

Model	Pressure range ⁽¹⁾		Indication unit	Connection thread
	MPa	psi		
G27-10-M5-X201	0 to 1.0	—	MPa	M5 (Female thread)
G27-P10-R1-X30 ⁽²⁾	0 to 1.0	0 to 150	MPa, psi	R 1/8

Note 1) Do not apply more excessive pressure than max. pressure display. It will be a cause of malfunction.

Note 2) Under the New Measurement Law, products for overseas use only (SI unit type for use in Japan)

How to Order



	Symbol	Description	①	
			Size	
			G15	G27
② Max. display pressure	10 ⁽¹⁾ P10 ^{(1), (2)}	1.0 MPa 1.0 MPa, 150 psi	● —	● ○ ⁽³⁾
③ Connection thread	+			
	01	R 1/8: M5 (Female thread)	●	—
	R1	R 1/8 R 1/16	—	●
④ Special specification ^(Note 4)	+			
	Nil X30	— Both MPa and psi	● —	● ○ ⁽³⁾

Note 1) Pressure other than 1.0 MPa is not available.

Note 2) This symbol must be used with Special specification "X30."

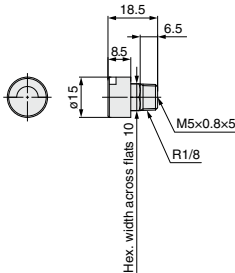
Note 3) Under the New Measurement Law, products for overseas use only (SI unit type for use in Japan)

Note 4) X3 (Wetted parts stainless steel) specifications are not available.

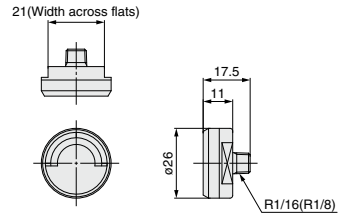
Note 5) Cover ring assembly is not available.

Dimensions (Except Made-to-Order products)

G15-10-01



G27-10-^{R1}01



* The dimensions in (): Connection thread R 1/8

Pressure Gauge for General Purpose/ With Limit Indicator

Series **G36/GA36**

RoHS



G36-10-01

• Be sure to read the precautions on page 739 for selection and mounting.

Standard Specifications

Model		G36	GA36
Type		Back side thread	Vertical side thread
Port size ⁽¹⁾		R 1/8 (Option M: With M5 female thread)	R 1/8
Fluid ^{(2) (4)}		Air	
Indication precision ⁽⁵⁾		±3% F.S. (Full span)	
Material	Case (Surface treatment)	Rolled steel (Electrodeposition coating black)	Stainless steel (Black melamine painted)
	Clear cover ⁽³⁾	Polycarbonate (Part no.: G36-00-00-4)	Polycarbonate (Part no.: G36-00-00-3)
	Stud (Surface treatment)	Aluminum die-casted (Black disulfide molybdenum coat treated)	Brass
	Bourdon tube	Brass	
Weight (kg)		0.04	0.05

Note 1) When installing a pressure gauge, be careful not to fasten too tight. Excessive tightening will result in damage. Use a pipe tape for sealing. Recommended tightening torque is R 1/8 : Set between 7 to 9 N·m.

Note 2) Not applicable to water as fluid because its stud is made from aluminum die-casted. Water may cause corrosion and block the air passage. Use a pressure gauge with wetted parts made from stainless steel, G46-□-X3. (Note: Take care when using G36-□-01M, whose wetted part is made from brass. Some corrosion may result.) Design system to not be affected by water hammer when using water as fluid. Similarly, when using other fluids, please consult with SMC, to prevent corrosion-related problems.

Note 3) Clear cover: G36-00-00-4 is not compatible with G36-00-00-3.

Note 4) Avoid freezing as this may cause a malfunction.

Note 5) The guaranteed temperature range is 23°C ±5°C.

Model (Standard)

Model	Pressure range ⁽¹⁾		Indication unit	Connection thread	Note
	MPa				
G36-2-01	0 to 0.2		MPa	R 1/8	—
G36-4-01	0 to 0.4				
G36-7-01	0 to 0.7				
G36-10-01	0 to 1.0				
GA36-10-01	0 to 1.0				

Note 1) Do not apply pressure more than the maximum display pressure. This will cause a malfunction.

Model (Made to Order)

Other versions of this unit can be made on a Made-to-Order basis. Please consult with SMC for details, as delivery times may be extended.

Model	Pressure range ⁽¹⁾		Indication unit	Connection thread	Note
	MPa	psi			
G36-P2-01-X30 ⁽²⁾	0 to 0.2	0 to 30	MPa, psi	R 1/8	—
G36-P10-01-X30 ⁽²⁾	0 to 1.0	0 to 150			
G36-15-01	0 to 1.5	—			

Note 1) Do not apply pressure more than the maximum display pressure. This will cause a malfunction.

Note 2) Under the New Measurement Law, products for overseas use only (SI unit type for use in Japan).

How to Order

Pressure gauge • **G** **36** - 10 - 01 -

1
2
3
4
5

	Symbol	Description	1	
			Type	
			G36	GA36
			Back side thread	Vertical side thread
2	Max. display pressure	+		
		2	0.2 MPa	●
		4	0.4 MPa	●
		7	0.7 MPa	●
		10	1.0 MPa	●
		15	1.5 MPa	●
		P2 ⁽¹⁾	0.2 MPa, 30 psi	○ ⁽²⁾
		P4 ⁽¹⁾	0.4 MPa, 60 psi	○ ⁽²⁾
		P7 ⁽¹⁾	0.7 MPa, 100 psi	○ ⁽²⁾
		P10 ⁽¹⁾	1.0 MPa, 150 psi	○ ⁽²⁾
		P15 ⁽¹⁾	1.5 MPa, 220 psi	○ ⁽²⁾
3	Connection thread	+		
		01	R 1/8	●
4	Option	+		
		Nil	—	●
		M ⁽³⁾	With M5 (Female thread)	●
5	Special specification ^{Note 4)}	+		
		Nil	—	●
		X2	Stud parts nickel plated	—
		X4	Oil-free (Wetted parts degrease washing)	●
		X30	Both MPa and psi	○ ⁽²⁾

Note 1) This symbol must be used with Special specification "X30."

Note 2) Under the New Measurement Law, products for overseas use only (SI unit type for use in Japan)

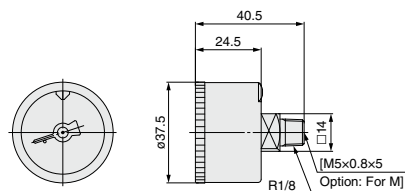
Note 3) To use the pressure gauge with M5 (female thread), attach the joint when piping the tube. For combinations with the special specification products, please consult SMC separately.

Note 4) X3 (Wetted parts stainless steel) specifications are not available.

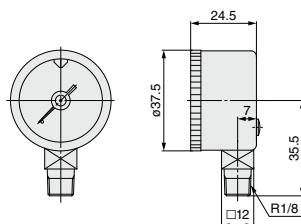
Note 5) Cover ring assembly is not available.

Dimensions

G36-□□-01(M)



GA36-□□-01



Pressure Gauge for General Purpose/ With Limit Indicator

Series G46/GA46

RoHS



G46-10-02M-C

- Be sure to read the precautions on page 739 for selection and mounting.

Standard Specifications

Model		G46	GA46
Type		Back side thread	Vertical side thread
Port size ⁽¹⁾		R 1/8, R 1/4 (Option M: with M5 female thread)	
Fluid ^{(2) (4)}		Air	
Indication precision ⁽⁵⁾		±3% F.S. (Full span)	
Material	Case (Surface treatment)	Rolled steel (Electrodeposition coating black)	Stainless steel (Black melamine painted)
	Clear cover ⁽³⁾	Polycarbonate Part no.: G46-00-00-4	Polycarbonate Part no.: G46-00-00-3
	Stud (Surface treatment)	Aluminum die-casted (Black disulfide molybdenum coated)	Brass
	Bourdon tube	Brass	
Weight (kg)		0.05	0.075
Attachment:		C	Part no.: 1305104-1A
With cover ring assembly		C1	Part no.: 1305104-3A

Note 1) When mounting a pressure gauge, use caution not to tighten excessively. Excessive tightening will cause product to be damaged. Use a pipe tape for sealing. Recommended tightening torque: R 1/8: Set between 7 to 9 N·m, R 1/4: 12 to 14 N·m respectively.

Note 2) Not applicable to water as fluid because its stud is made from aluminum die-casting. Water may cause corrosion and block the air passage. Use G46-C1-X3 pressure gauge with wetted parts stainless steel (wetted parts of G46-C1-01M are made of brass and this become lightly corroded. Take precautions when using.) Design system to not be affected by water hammer when using water as fluid. Similarly, when using other fluids, please consult SMC for fluid compatibility information concerning corrosive potential.

Note 3) Clear cover: G46-00-00-4 is not compatible with G46-00-00-3.

Note 4) Avoid freezing as this may cause a malfunction.

Note 5) The guaranteed temperature range is 23°C ±5°C.

Model (Standard)

Model	Pressure range ⁽¹⁾ MPa	Indication unit	Connection thread	Note	
G46-2-01/02	0 to 0.2	MPa	R 1/8, 1/4	—	
G46-4-01/02	0 to 0.4				
G46-7-01/02	0 to 0.7				
G46-10-01/02	0 to 1.0				
G46-2-01 to 02M	0 to 0.2				
G46-4-01 to 02M	0 to 0.4				
G46-7-01 to 02M	0 to 0.7				
G46-10-01 to 02M	0 to 1.0				
GA46-10-01 to 02	0 to 1.0		M5 (Female thread)		
			R 1/8, 1/4		

Note 1) Do not apply pressure more than the maximum display pressure. This will cause a malfunction.

Model (Made to Order)

Model (made to order) details, as delivery times may be extended.					
Model	Pressure range ⁽¹⁾		Indication unit	Connection thread	Note
	MPa	psi			
G46-2-01 to 02-C/C1	0 to 0.2	—	MPa	R 1/8, 1/4 MS (Female thread)	With cover ring assembly
G46-4-01 to 02-C/C1	0 to 0.4	—			
G46-7-01 to 02-C/C1	0 to 0.7	—			
G46-10-01 to 02-C/C1	0 to 1.0	—			
G46-2-01 to 02M-C/C1	0 to 0.2	—			
G46-4-01 to 02M-C/C1	0 to 0.4	—			
G46-7-01 to 02M-C/C1	0 to 0.7	—			
G46-10-01 to 02M-C/C1	0 to 1.0	—			
G46-P2-01 to 02-X30 ⁽²⁾	0 to 0.2	0 to 30	MPa, psi	R 1/8, 1/4	—
G46-P10-01 to 02-X30 ⁽²⁾	0 to 1.0	0 to 150			
G46-2-02M-X4	0 to 0.2	—	MPa	R 1/4 MS (Female thread)	Oil-free Oil-free, With cover ring assembly
G46-4-02M-X4	0 to 0.4	—			
G46-7-02M-X4	0 to 0.7	—			
G46-10-02M-X4	0 to 1.0	—			
G46-2-02M-C/C1-X4	0 to 0.2	—			
G46-4-02M-C/C1-X4	0 to 0.4	—			
G46-7-02M-C/C1-X4	0 to 0.7	—			
G46-10-02M-C/C1-X4	0 to 1.0	—			
G46-P2-01 to 02-C-X30 ⁽²⁾	0 to 0.2	0 to 30	MPa, psi	R 1/8, 1/4	With cover ring assembly
G46-P10-01 to 02-C-X30 ⁽²⁾	0 to 1.0	0 to 150			
G46-15-02	0 to 1.5	—	MPa	R 1/4	—

Note 1) Do not apply pressure more than the maximum display pressure. This will cause a malfunction.

Note 2) Under the New Measurement Law, products for overseas use only (SI unit type for use in Japan).

How to Order

Pressure gauge • **G** **46** - 10 - 01 - -

1
2
3
4
5
6

	Symbol	Description	1	
			Type	
			G46	GA46
			Back side thread	Vertical side thread
2	Max. display pressure	2	0.2 MPa	●
		4	0.4 MPa	●
		7	0.7 MPa	●
		10	1.0 MPa	●
		15	1.5 MPa	●
		P2 ⁽¹⁾	0.2 MPa, 30 psi	○ ⁽²⁾
		P4 ⁽¹⁾	0.4 MPa, 60 psi	○ ⁽²⁾
		P7 ⁽¹⁾	0.7 MPa, 100 psi	○ ⁽²⁾
		P10 ⁽¹⁾	1.0 MPa, 150 psi	○ ⁽²⁾
		P15 ⁽¹⁾	1.5 MPa, 220 psi	○ ⁽²⁾
3	Connection thread	01	R 1/8	●
		02	R 1/4	●
4	Option	Nil	—	●
		M ⁽³⁾	With M5 (Female thread)	●
5	Note 4) Attachment	Nil	Without cover ring assembly	●
		C	Clear cover has no protrusion. (Clear cover is removable.)	●
		C1	Clear cover has protrusion. (Clear cover is removable.)	●
6	Special specification	Nil	—	●
		X2	Stud parts Nickel plated	—
		X3 ⁽⁵⁾	Wetted parts stainless steel	●
		X4	Oil-free (Wetted parts degrease washing.)	●
		X30	Both MPa and psi	○ ⁽²⁾

Note 1) This symbol must be used with Special specification "X30."

Note 2) ○: Under the New Measurement Law, products for overseas use only (SI unit type for use in Japan).

Note 3) To use the pressure gauge with M5 (female thread), attach the joint when piping the tube. For combinations with the special specification products, please consult SMC separately.

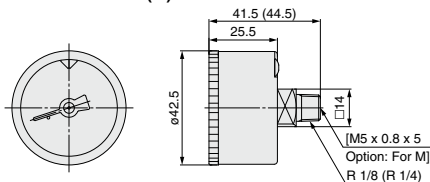
Note 4) For pressure gauges with the cover ring assembly, it is recommended to select the option M so as to perform the piping.

Note 5) Movable parts (gear, etc) inside pressure gauge are made of brass.

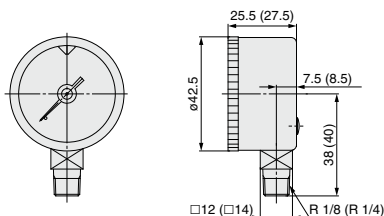
Dimensions (Except Made-to-Order products)

* The dimensions in (): Connecting thread R 1/4

G46-□□-01 to 02 (M)

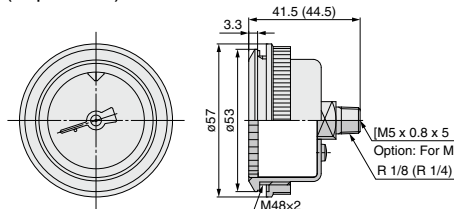


GA46-□□-01 to 02

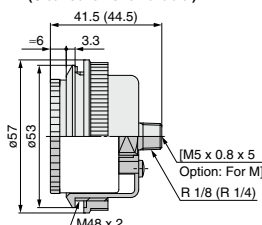


G46-□□-01 to 02 (M-C) G46-□□-01 to 02 (M-C1) With cover ring assembly (For panel mount)

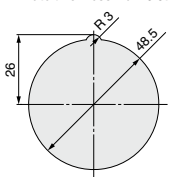
Type C
(Clear cover is not removable.)



Type C1
(Clear cover is removable.)



Panel fitting dimensions
Plate thickness Max. 3.5t



Pressure Gauge for General Purpose

Series **G33/GA33**

RoHS



- Be sure to read the precautions on page 739 for selection and mounting.

Standard Specifications

Model		G33	GA33
Type		Back side thread	Vertical side thread
Port size ⁽¹⁾		R 1/8	
Fluid ⁽²⁾		Air	
Indication precision		±3% F.S. (Full span)	
Material	Case	Stainless steel	
	Clear cover	Glass	
	Stud	Brass	
	Bourdon tube	Brass	
Weight [kg]		0.03	0.033
Applicable model		IP5000, IP6000, IR1000, IT1000	ARM2500, 3000

Note 1) When mounting a pressure gauge, use caution not to tighten excessively. Excessive tightening will cause product to be damaged. Use a pipe tape for sealing. Recommended tightening torque: R 1/8: Set between 7 to 9 N·m.

Note 2) When using other fluids, please consult with SMC for fluid compatibility information concerning corrosive potential.

Model (Standard)

Model (Standard)		Pressure range ⁽¹⁾	Indication unit	Connection thread	Note
Model		MPa			
G33-2-01		0 to 0.2	MPa	R 1/8	—
G33-3-01		0 to 0.3			
G33-4-01		0 to 0.4			
G33-6-01		0 to 0.6			
G33-10-01		0 to 1.0			
GA33-2-01		0 to 0.2			
GA33-4-01		0 to 0.4			
GA33-7-01		0 to 0.7			
GA33-10-01		0 to 1.0			

Note 1) Do not apply pressure more than the maximum display pressure. This will cause a malfunction.

Model (Made to Order)

Model	Pressure range ⁽¹⁾		Indication unit	Connection thread	Note
	MPa	psi			
G33-2-01-X2	0 to 0.2	—	MPa	R 1/8	X2: Stud parts electroless nickel plated
G33-3-01-X2	0 to 0.3	—			
G33-4-01-X2	0 to 0.4	—			
G33-6-01-X2	0 to 0.6	—			
G33-10-01-X2	0 to 1.0	—			
GA33-2-01-X2	0 to 0.2	—			X2: Stud parts nickel plated
GA33-4-01-X2	0 to 0.4	—			
GA33-7-01-X2	0 to 0.7	—			
GA33-10-01-X2	0 to 1.0	—			
G33-10-01-X4	0 to 1.0	—	MPa, psi	R 1/8	X4: Oil-free (Wetted parts degreasing)
GA33-P10-01-X30 ⁽²⁾	0 to 1.0	0 to 150			—

Note 1) Do not apply pressure more than the maximum display pressure. This will cause a malfunction.

Note 2) Under the New Measurement Law, products for overseas use only (SI unit type for use in Japan)

How to Order

Pressure gauge • **G** **33** - 10 - 01 -

1
2
3
4

	Symbol	Description	1	
			Type	
			G33	GA33
			Back side thread	Vertical side thread
2 Max. display pressure	+			
	2	0.2 MPa	●	●
	3	0.3 MPa	●	—
	4	0.4 MPa	●	●
	6	0.6 MPa	●	—
	7	0.7 MPa	●	●
	10	1.0 MPa	●	●
	P2 ⁽¹⁾	0.2 MPa, 30 psi	○ ⁽²⁾	—
	P3 ⁽¹⁾	0.3 MPa, 45 psi	○ ⁽²⁾	—
	P4 ⁽¹⁾	0.4 MPa, 60 psi	○ ⁽²⁾	—
	P6 ⁽¹⁾	0.6 MPa, 90 psi	○ ⁽²⁾	—
	P7 ⁽¹⁾	0.7 MPa, 100 psi	○ ⁽²⁾	—
	P10 ⁽¹⁾	1.0 MPa, 150 psi	○ ⁽²⁾	○ ⁽²⁾
3 Connection thread	+			
	01	R 1/8	●	●
5 Special specification ^{Note 3)}	+			
	Nil	—	●	●
	X2	Stud parts nickel plated	●	●
	X4	Oil-free (Wetted parts degrease washing)	●	●
	X30	Both MPa and psi	○ ⁽²⁾	○ ⁽²⁾

Note 1) This symbol must be used with Special specification "X30."

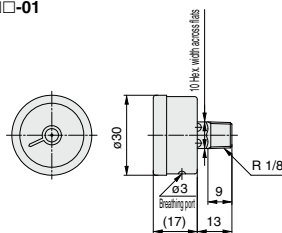
Note 2) Under the New Measurement Law, products for overseas use only (SI unit type for use in Japan)

Note 3) X3 (Wetted parts stainless steel) specifications are not available.

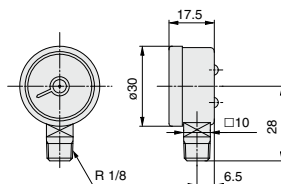
Note 4) Cover ring assembly is not available.

Dimensions

G33-□□-01



GA33-□□-01



G

GS

PPA

Pressure Gauge for General Purpose (DT type)

Series G43

RoHS



G43-10-01

- Be sure to read the precautions on page 739 for selection and mounting.

Standard Specifications

Model		G43
Type	Back side thread	
Port size ⁽¹⁾	R 1/8, R 1/4	
Fluid ⁽²⁾	Air	
Indication precision	±3% F.S. (Full span)	
Material	Case	Stainless steel
	Clear cover	Glass
	Stud	Brass
	Bourdon tube	Brass
Weight [kg]	0.07	
Applicable model	IP200, IP8000, IR2000, IR3000, IT2000, 4000	

Note 1) When mounting a pressure gauge, use caution not to tighten excessively. Excessive tightening will cause product to be damaged. Use a pipe tape for sealing. Recommended tightening torque: R 1/8: Set between 7 to 9 N·m, R 1/4: 12 to 14 N·m respectively.

Note 2) When using with water, use G43-□-X3 (wetted parts stainless steel) and use caution not to apply water hammer. When using the other fluids, please consult with SMC for fluid compatibility information concerning corrosive potential.

Model (Standard)

Model	Pressure range ⁽¹⁾	Indication unit	Connection thread	Note
	MPa			
G43-2-01 to 02	0 to 0.2	MPa	R 1/8, R 1/4	—
G43-4-01 to 02	0 to 0.4		R 1/8	
G43-6-01	0 to 0.6			
G43-7-01 to 02	0 to 0.7			
G43-10-01 to 02	0 to 1.0		R 1/8, R 1/4	

Note 1) Do not apply pressure more than the maximum display pressure. This will cause a malfunction.

Model (Made to Order)

Model (made to order)		Pressure range ⁽¹⁾	Indication unit	Connection thread	Note
Model		MPa			
G43-2-01 to 02-X2		0 to 0.2	MPa	R 1/8, R 1/4	X2: Stud parts nickle plated
G43-4-01 to 02-X2		0 to 0.4		R 1/8	
G43-6-01-X2		0 to 0.6		R 1/8, R 1/4	
G43-7-01 to 02-X2		0 to 0.7			
G43-10-01 to 02-X2		0 to 1.0		R 1/8, R 1/4	X3: Wetted parts stainless steel
G43-2-01 to 02-X3		0 to 0.2			
G43-4-01 to 02-X3		0 to 0.4			
G43-6-01-X3		0 to 0.6		R 1/8	
G43-7-01 to 02-X3		0 to 0.7		R 1/8, R 1/4	
G43-10-01 to 02-X3		0 to 1.0			
G43-2-01 to 02-X4		0 to 0.2		R 1/8, R 1/4	X4: Oil-free (Wetted parts degreasing)
G43-4-01 to 02-X4		0 to 0.4			
G43-6-01-X4		0 to 0.6		R 1/8	
G43-7-01 to 02-X4		0 to 0.7		R 1/8, R 1/4	
G43-10-01 to 02-X4		0 to 1.0			

Note 1) Do not apply pressure more than the maximum display pressure. This will cause a malfunction.

How to Order

G 43 - **10** - **01** -

Pressure gauge • ① ② ③

	Symbol	Description	G43
①	Max. display pressure	+	
		2	0.2 MPa ●
		3	0.3 MPa ●
		4	0.4 MPa ●
		6	0.6 MPa ●
		7	0.7 MPa ●
		10	1.0 MPa ●
		P2 ⁽¹⁾	0.2 MPa, 30 psi ○ ⁽²⁾
		P4 ⁽¹⁾	0.4 MPa, 60 psi ○ ⁽²⁾
		P6 ⁽¹⁾	0.6 MPa, 90 psi ○ ⁽²⁾
		P7 ⁽¹⁾	0.7 MPa, 100 psi ○ ⁽²⁾
		P10 ⁽¹⁾	1.0 MPa, 150 psi ○ ⁽²⁾
②	Connection thread	+	
		01	R 1/8 ●
		02	R 1/4 ●
③	Special specification	+	
		Nil	— ●
		X2	Stud parts nickel plated —
		X3 ⁽³⁾	Wetted parts stainless steel ●
		X4	Oil-free (Wetted parts degrease washing) ●
		X30	Both MPa and psi ○ ⁽²⁾

Note 1) This symbol must be used with Special specification "X30."

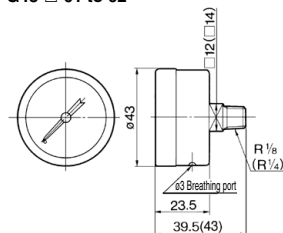
Note 2) Under the New Measurement Law, products for overseas use only (SI unit type for use in Japan)

Note 3) Movable parts (gear, etc.) inside pressure gauge are made of brass.

Note 4) Cover ring assembly is not available.

Dimensions (Except Made-to-Order products)

G43-□-01 to 02



* The dimensions in (): Connection thread R 1/4

G

GS

PPA

With Color Zone Limit Indicator Series **G36-L/G46-L**

RoHS



G36-10-01-L

G46-10-02-L

Standard Specifications

Model		G36-L	G46-L
Type		Back side thread	
Port size ⁽¹⁾		R 1/8	R 1/8, R 1/4
Fluid ^{(2) (3)}		Air	
Indication precision ⁽⁴⁾		±3%F.S. (Full span)	
Material	Case (Surface treatment)	Stainless steel (Black melamine painted)	
	Clear cover	Polycarbonate (Part no.: G36-00-00-3) Nylon (Part no.: G36-00-00-3N)	Polycarbonate (Part no.: G46-00-00-3) Nylon (Part no.: G46-00-00-3N)
	Stud	Brass	
	Bourdon tube	Brass	
Weight (kg)		0.04	0.05
Attachment: With cover ring assembly	C	—	Part no.: 1305104-1A
	C1		Part no.: 1305104-3A

Note 1) When mounting a pressure gauge, use caution not to tighten excessively. Excessive tightening will cause product to be damaged. Use a pipe tape for sealing.

Recommended tightening torque: R 1/8: Set between 7 to 9 N·m, R 1/4: 12 to 14 N·m respectively.

Note 2) When using other fluids, please consult with SMC for fluid compatibility information concerning corrosive potential.

Note 3) Avoid freezing as this may cause a malfunction.

Note 4) The guaranteed temperature range is 23°C ±5°C.

Model (Standard)

Model	Pressure range ⁽¹⁾		Green zone setting range		Indication unit	Connection thread	Note
	MPa	psi	Minimum setting range MPa	Maximum setting range MPa			
G36-2-01-□	0 to 0.2		0.01	0.1	MPa	R 1/8	—
G36-4-01-□	0 to 0.4		0.02	0.2			
G36-10-01-□	0 to 1.0		0.05	0.5			
G46-2-01 to 02-□	0 to 0.2		0.01	0.1			
G46-4-01 to 02-□	0 to 0.4		0.02	0.2			
G46-10-01 to 02-□	0 to 1.0		0.05	0.5		R 1/8 1/4	

Note 1) Do not apply pressure more than the maximum display pressure. This will cause a malfunction.

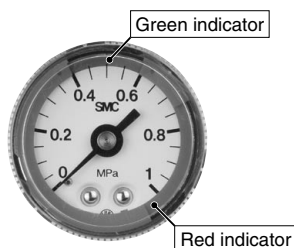
Model (Made to Order)

Model	Pressure range ⁽¹⁾		Green zone setting range		Indication unit	Connection thread	Note
	MPa	psi	Minimum setting range MPa (psi)	Maximum setting range MPa (psi)			
G36-P2-01-□-X30	0 to 0.2	0 to 30	0.01 (2)	0.1 (14)	MPa psi	R 1/8	—
G36-P4-01-□-X30	0 to 0.4	0 to 60	0.02 (4)	0.2 (28)			
G36-P10-01-□-X30	0 to 1.0	0 to 150	0.05 (10)	0.5 (70)			
G46-P2-01 to 02-□-X30	0 to 0.2	0 to 30	0.01 (2)	0.1 (14)			
G46-P4-01 to 02-□-X30	0 to 0.4	0 to 60	0.02 (4)	0.2 (28)			
G46-P10-01 to 02-□-X30	0 to 1.0	0 to 150	0.05 (10)	0.5 (70)		R 1/8 1/4	

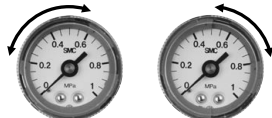
Note 1) Do not apply pressure more than the maximum display pressure. This will cause a malfunction.

Note 2) Under the New Measurement Law, products for overseas use only (SI unit type for use in Japan).

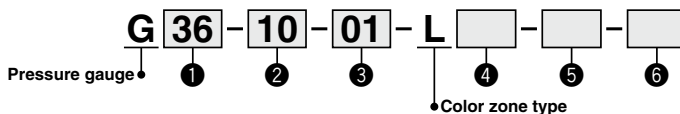
■Red and green zones offer improved visibility of pressure control range.



Indicator adjusts to highlight preferred range.



How to Order



		Symbol	Description	① Size	
				G36	G46
		+			
②	Max. display pressure	2	0.2 MPa	●	●
		4	0.4 MPa	●	●
		10	1.0 MPa	●	●
		P2 ⁽¹⁾	0.2 MPa, 30 psi	○ ⁽²⁾	○ ⁽²⁾
		P4 ⁽¹⁾	0.4 MPa, 60 psi	○ ⁽²⁾	○ ⁽²⁾
		P10 ⁽¹⁾	1.0 MPa, 150 psi	○ ⁽²⁾	○ ⁽²⁾
		+			
③	Connection thread	01	R 1/8	●	●
		02	R 1/4	—	●
		+			
④	Clear cover material	Nil	Polycarbonate	●	●
		N	Nylon	●	●
		+			
⑤	Attachment	Nil	Without cover ring assembly	—	●
		C	Clear cover has no protrusion. (Clear cover is immovable.)	—	●
		C1	Clear cover has protrusion. (Clear cover is removable.)	—	●
		+			
⑥	Special specification	Nil	—	●	●
		X2	Stud parts nickel plated	—	—
		X30	Both MPa and psi	○ ⁽²⁾	○ ⁽²⁾

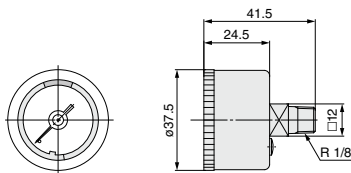
Note 1) This symbol must be used with Special specification "X30."

Note 2) Under the New Measurement Law, products for overseas use only (SI unit type for use in Japan)

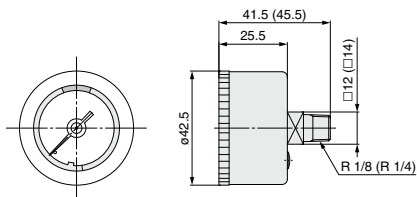
Dimensions

* The dimensions in (): Connection thread R 1/4

G36-□□-01-L (N)

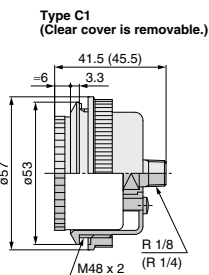
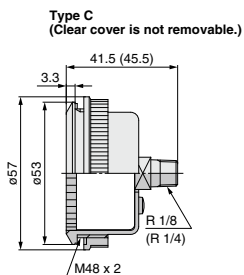
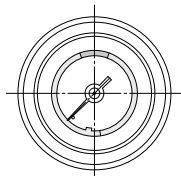


G46-□□-01 to 02-L(N)

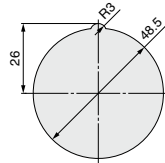


G46-□□-01 to 02-L(N)-C
G46-□□-01 to 02-L(N)-C1

With cover ring assembly
(For panel mount)



Panel fitting dimensions
Plate thickness Max. 3.5 t



Oil-free/External Parts Copper-free Pressure Gauge/With Limit Indicator

Series G46E

RoHS



G46E-10-02M



G46E-10-02M-C

- Be sure to read the precautions on page 739 for selection and mounting.

Standard Specifications

Model		G46E
Type	Back side thread	
Port size ⁽¹⁾	R 1/8, R 1/4 (Option M: with M5 female thread)	
Fluid ^{(2) (4)}	Air	
Indication precision ⁽⁵⁾	±3% F.S. (Full span)	
Fluid contact part cleaning		Wetted parts degrease washing
Material	Case (Surface treatment)	Rolled steel (Black melamine painted)
	Clear cover (Surface treatment)	Polycarbonate (Hard coated) Part no.: G46-00-00-2
	Stud (Surface treatment)	Brass (Electroless nickel plated)
	Bourdon tube	Brass ⁽³⁾
Weight (kg)		0.08
Attachment: With cover ring assembly	C	Part no.: 1305104-1A
	C1	Part no.: 1305104-3A

Note 1) When mounting a pressure gauge, use caution not to tighten excessively. Excessive tightening will cause product failure. Use a pipe tape for sealing. Recommended tightening torque: R 1/8: Set between 7 to 9 N·m, R 1/4: 12 to 14 N·m respectively.

Note 2) When fluid is water, use G46-□-SRB. Wetted parts are made of stainless steel construction. (Some corrosion may be caused by water because this product's wetted parts are made of brass.) Design system to not be affected by water hammer when using water as fluid. Similarly, when using other fluids, please consult with SMC for fluid compatibility information concerning corrosive potential.

Note 3) Bourdon tube and internal movable parts (gear, etc.) are made of brass and are not electrolessly nickel plated. This is not an internally copper-free product.

Note 4) Avoid freezing as this may cause a malfunction.

Note 5) The guaranteed temperature range is 23°C ±5°C.

Model (Standard)

Model	Pressure range ⁽¹⁾	Indication unit	Connection thread	Note
	MPa			
G46E-2-01 to 02M	0 to 0.2	MPa	R ⅜ R ¼ M5 (Female thread)	—
G46E-4-01 to 02M	0 to 0.4			
G46E-7-01 to 02M	0 to 0.7			
G46E-10-01 to 02M	0 to 1.0			

Note 1) Do not apply pressure more than the maximum display pressure. This will cause a malfunction.

Model (Made to Order)

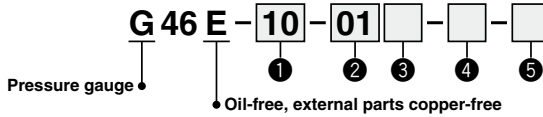
Other versions of this unit can be made on a Made-to-Order basis.
Please consult SMC for details, as delivery times may be extended.

Model	Pressure range ⁽¹⁾		Indication unit	Connection thread	Note
	MPa	psi			
G46E-2-01 to 02M-C, C1	0 to 0.2	—	MPa	R 1/8 R 1/4 M5 (Female thread)	With cover ring assembly
G46E-4-01 to 02M-C, C1	0 to 0.4	—			
G46E-7-01 to 02M-C, C1	0 to 0.7	—			
G46E-10-01 to 02M-C, C1	0 to 1.0	—			
G46E-P2-01 to 02M-C, C1-X30 ⁽²⁾	0 to 0.2	0 to 30	MPa, psi	M5 (Female thread)	
G46E-P10-01 to 02M-C, C1-X30 ⁽²⁾	0 to 1.0	0 to 150			

Note 1) Do not apply pressure more than the maximum display pressure. This will cause a malfunction.

Note 2) Under the New Measurement Law, products for overseas use only (SI unit type for use in Japan)

How to Order



	Symbol	Description	G46E
1	+ Max. display pressure		
	2	0.2 MPa	●
	4	0.4 MPa	●
	7	0.7 MPa	●
	10	1.0 MPa	●
	15	1.5 MPa	●
	P2 ⁽¹⁾	0.2 MPa, 30 psi	○ ⁽²⁾
	P7 ⁽¹⁾	0.7 MPa, 100 psi	○ ⁽²⁾
	P10 ⁽¹⁾	1.0 MPa, 150 psi	○ ⁽²⁾
2	+ Connection thread		
	01	R 1/8	●
	02	R 1/4	●
3	+ Option		
	Nil	—	●
4	+ Attachment ^{Note 4)}		
	Nil	Without cover ring assembly	●
	C	Clear cover has no protrusion. (Clear cover is irremovable.)	●
	C1	Clear cover has protrusion. (Clear cover is removable.)	●
5	+ Special specification		
	X30	Both MPa and psi	○ ⁽²⁾

Note 1) This symbol must be used with Special Specification "X30."

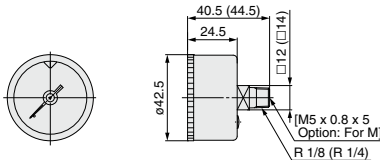
Note 2) Under the New Measurement Law, products for overseas use only (SI unit type for use in Japan)

Note 3) To use the pressure gauge with M5 (female thread), attach the joint when piping the tube.

Note 4) For pressure gauges with the cover ring assembly, it is recommended to select the option M so as to perform the piping.

Dimensions * The dimensions in (): Connection thread R 1/4

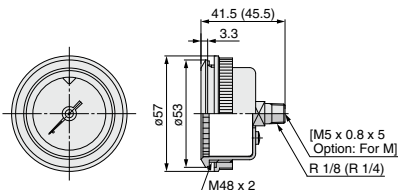
G46E-□□-01 to 02 (M)



With cover ring assembly (For panel mount)

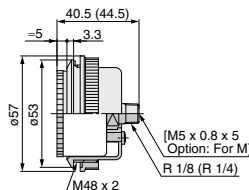
G46E-□□-01 to 02 (M)-C

Type C (Clear cover is not removable.)

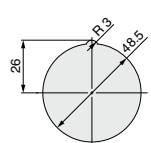


G46E-□□-01 to 02 (M)-C1

Type C1 (Clear cover is removable.)



Panel fitting dimensions
Plate thickness Max. 3.5 t



G
GS
PPA

Refer to page 738 for mounting method.

Pressure Gauge for Clean Series (10-series)

Series G49



- Be sure to read the precautions on page 739 for selection and mounting.

Standard Specifications

Installation of a filter on the breathing hole (filtration 3 μm) enables an unit to curb particle generation from the pressure gauge inside.

Model		G49
Type		Back side thread
Port size ⁽¹⁾		R 1/8, R 1/4
Fluid ^{(2) (4)}		Air
Indication precision ⁽⁵⁾		±3% F.S. (Full span)
Material	Case (Surface treatment)	Zinc die-casted (Chromate plated)
	Clear cover	Glass
	Stud (Surface treatment)	Brass (Nickel plated for external parts only)
	Bourdon tube	Brass ⁽³⁾
Weight (kg)		0.095

Note 1) When mounting a pressure gauge, use caution not to tighten excessively. Excessive tightening will cause product failure. Use a pipe tape for sealing. Recommended tightening torque: R1/8: Set between 7 to 9 N·m, R1/4: 12 to 14 N·m respectively.

Note 2) When fluid is water, use G49-□-X3. Wetted parts of G49-□-X3 are made of Stainless steel. Use caution as some corrosion may be caused by water. Standard G49 pressure gauge contact area is made of brass. When using water, use caution not to apply water hammer. Similarly, when using other fluids, consult SMC for fluid compatibility information concerning corrosive potential.

Note 3) Bourdon tube and internal movable parts (gear, etc.) are made of brass, and are not nickel plated.

Note 4) Avoid freezing as this may cause a malfunction.

Note 5) The guaranteed temperature range is 23°C ±5°C.

Model (Standard)

Model	Pressure range ⁽¹⁾	Indication unit	Connection thread	Note
	MPa			
G49-2-02	0 to 0.2	MPa	R ¼	—
G49-7-02	0 to 0.7			
G49-10-02	0 to 1.0			

Note 1) Do not apply pressure more than the maximum display pressure. This will cause a malfunction.

Model (Made to Order)

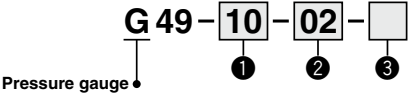
Other versions of this unit can be made on a Made-to-Order basis.
Please consult with SMC for details, as delivery times may be extended.

Model	Pressure range ⁽¹⁾		Indication unit	Connection thread	Note
	MPa	psi			
G49-P2-02-X30 ⁽²⁾	0 to 0.2	0 to 30	MPa, psi	R 1/4	—
G49-P10-02-X30 ⁽²⁾	0 to 1.0	0 to 150			

Note 1) Do not apply pressure more than the maximum display pressure. This will cause a malfunction.

Note 2) Under the New Measurement Law, products for overseas use only (SI unit type for use in Japan)

How to Order



	Symbol	Description	G49
+			
① Max. display pressure	2	0.2 MPa	●
	4	0.4 MPa	●
	7	0.7 MPa	●
	10	1.0 MPa	●
	P2 ⁽¹⁾	0.2 MPa, 30 psi	○ ⁽²⁾
	P10 ⁽¹⁾	1.0 MPa, 150 psi	○ ⁽²⁾
+			
② Connection thread	01	R 1/8	●
	02	R 1/4	●
+			
③ Special specification	Nil	—	●
	X3 ⁽³⁾	Wetted parts stainless steel	●
	X30	Both MPa and psi	○ ⁽²⁾

Note 1) This symbol must be used with Special specification "X30."

Note 2) Under the New Measurement Law, products for overseas use only
(SI unit type for use in Japan)

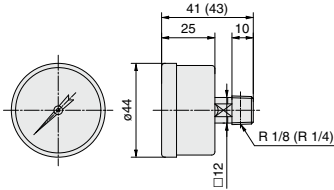
Note 3) Movable parts (gear, etc.) inside pressure gauge are made of brass.

In addition, this specification is only available for connection thread "02".

Note 4) Cover ring assembly is not available.

Dimensions * The dimensions in (): Connection thread R 1/4

G49-□-01 to 02



G

GS

PPA

Pressure Gauge for Clean Regulator/ With Limit Indicator

Series **G46-SRA/B**

RoHS



G46-10-02-SRA,B

- Be sure to read the precautions on page 739 for selection and mounting.

Standard Specifications

Model		G46-□-SRA	G46-□-SRB
Type		Back side thread	
Port size ⁽¹⁾		R 1/8, R 1/4	
Fluid ⁽²⁾ ⁽⁵⁾		Air	Air
Indication precision ⁽⁶⁾		±3% F.S. (Full span)	
Fluid contact part cleaning (Wetted part)		Precision cleaning	General degreasing
Assembly/environment		Clean room M5.5 (Class 10000)	General production line
Oil/Water free		Oil/Water-free ⁽³⁾	
Material ⁽⁴⁾	Case	Stainless steel 304 (Black melamine painted)	
	Clear cover (Surface treatment)	Polycarbonate (Hard coated) Part no.: G46-00-00-2	
	Stud	Stainless steel 316	
	Bourdon tube	Stainless steel 316	
Attachment: cover ring assembly		C	Part no.: 1305104-6A
		C1	Part no.: 1305104-7A
Packaging		• Polyethylene cap for stud parts. • Airtight polyethylene bag	• Polyethylene cap for stud parts. • Polyethylene bag
Weight (kg)		0.085	0.085

Note 1) When mounting a pressure gauge, use caution not to tighten excessively. Excessive tightening will cause product failure. Use a pipe tape for sealing. Recommended tightening torque: R 1/8 : Set between 7 to 9 N·m, R 1/4 : 12 to 14 N·m respectively.

Note 2) When using water, use caution not to apply water hammer. When using other fluids, please consult with SMC for compatibility information concerning corrosion potential.

Note 3) When manufacturing pressure gauge, SMC uses caution not to allow water to remain in the wetted parts.

Note 4) Movable parts (gear, etc) inside pressure gauge are made of brass.

Note 5) Avoid freezing as this may cause a malfunction.

Note 6) The guaranteed temperature range is 23°C ±5°C.

Model (Standard)

Model	Pressure range ⁽¹⁾	Indication unit	Connection thread	Note
	MPa			
G46-2-01 to 02-SRA	0 to 0.2	MPa	R 1/8 R 1/4	—
G46-2-01 to 02-SRB				
G46-4-01 to 02-SRA	0 to 0.4			
G46-4-01 to 02-SRB				
G46-7-02-SRA	0 to 0.7			
G46-7-02-SRB				
G46-10-02-SRA	0 to 1.0			
G46-10-02-SRB				

Note 1) Do not apply pressure more than the maximum display pressure. This will cause a malfunction.

Model (Made to Order)

Other versions of this unit can be made on a Made-to-Order basis.

Please consult with SMC for details, as delivery times may be extended.

Model	Pressure range ⁽¹⁾		Indication unit	Connection thread	Note
	MPa	psi			
G46-P2-01 to 02-SRA-X30 ⁽²⁾	0 to 0.2	0 to 30	MPa, psi	R 1/8 R 1/4	—
G46-P10-01 to 02-SRB-X30 ⁽²⁾	0 to 1.0	0 to 150			

Note 1) Do not apply pressure more than the maximum display pressure. This will cause a malfunction.

Note 2) Under the New Measurement Law, products for overseas use only (SI unit type for use in Japan)

How to Order

G46 - **10** - **01** - **□** - **SRA** - **□** - **□**

Pressure gauge ① ② ③ ④ ⑤ ⑥

	Symbol	Description	G46
① Max. display pressure	+		
	2	0.2 MPa	●
	4	0.4 MPa	●
	7	0.7 MPa	●
	10	1.0 MPa	●
	P2 ⁽¹⁾	0.2 MPa, 30 psi	○ ⁽²⁾
	P10 ⁽¹⁾	1.0 MPa, 150 psi	○ ⁽²⁾
② Connection thread	+		
	01	R 1/8	●
③ Option	+		
	Nil	—	●
④ Grade	+		
	M ⁽³⁾	With M5 (Female thread)	●
⑤ Attachment ^{Note 4)}	+		
	SRA	Component parts: Precision cleaning Assembly: Clean room M5.5 (Class 10000)	●
	SRB	Component parts: General degreasing Assembly: General production line	●
	+		
⑥ Special specification	Nil	Without cover ring assembly	●
	C	Clear cover has no protrusion. (Clear cover is irremovable.)	●
	C1	Clear cover has protrusion. (Clear cover is removable.)	●
⑦	+		
	Nil	—	●
⑧	+		
	X30	Both MPa and psi	○ ⁽²⁾

Note 1) This symbol must be used with Special specification "X30."

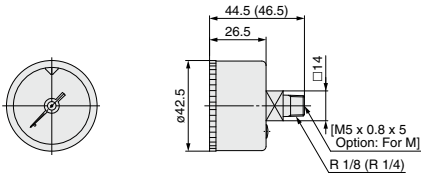
Note 2) Under the New Measurement Law, products for overseas use only (SI unit type for use in Japan)

Note 3) To use the pressure gauge with M5 (female thread), attach the joint when piping the tube.
For combinations with the special specification products, please consult SMC separately.

Note 4) For pressure gauges with the cover ring assembly, it is recommended to select the option M so as to perform the piping.

Dimensions * The dimensions in (): Connection thread R 1/4

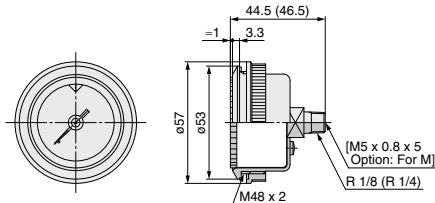
G46-□□-01 to 02 (M)-SRA/SRB



With cover ring assembly (For panel mount)

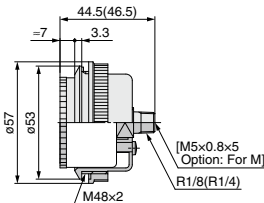
G46-□□-01 to 02 (M)-SRA/SRB-C

Type C (Clear cover is not removable.)

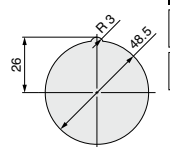


G46-□□-01 to 02 (M)-SRA/SRB-C1

Type C1 (Clear cover is removable.)



Panel fitting dimensions
Plate thickness Max. 3.5 t



Pressure Gauge with Switch

Series GP46

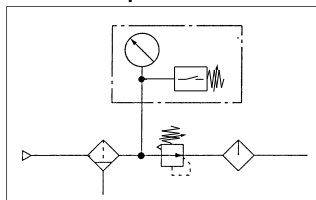


RoHS



- A pressure switch function has been added to the gauge.
- The pressure switch is equipped with a light for verifying operation.
- The pressure gauge is equipped with a limit indicator.
- To be used for verifying the supply pressure.

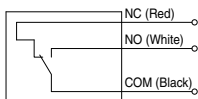
Circuit Example



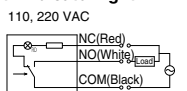
- Be sure to read the precautions for selection and mounting.

Circuit Diagram

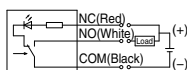
Without indicator light



With indicator light



24 VDC



The arrow in the diagram indicates the direction of the pressure increase.
The light turns OFF when the pressure becomes higher than the set pressure and turns ON when the pressure becomes lower than the set pressure.

Standard Specifications

Model		GP46
Gauge	Type	Back side thread
	Ambient and fluid temperature	-5 to 60°C (No freezing)
	Indicated pressure range	0 to 1.0 MPa
	Port size ⁽¹⁾	R 1/8, R 1/4 (Option M: with M5 female thread)
Pressure switch	Fluid ^{(2) (6)}	Air
	Indication precision ⁽⁷⁾	±0.03 MPa
	Setting range ^{(3) (4)}	0.1 to 0.8 MPa
	Hysteresis	0.07 MPa
	Pointer error ⁽⁵⁾	±0.05 MPa (-5 to 40°C) ±0.08 MPa (-5 to 60°C) No freezing
	Contact	With light: 1a (Normally open) Without light: 1ab (Normally open/ Normally closed)
	Wiring	Lead wire (Length: 300 mm)
	Indicator light	AC DC Neon light Light emitting diode (LED)
Clear cover		Part no.: G46-00-00-3
Attachment: With cover ring assembly		C Part no.: 1305104-4A
Weight (kg)		0.12

Note 1) When mounting a pressure gauge, use caution not to tighten excessively. Excessive tightening will cause product to be damaged. Use a pipe tape for sealing. Recommended tightening torque: R 1/8: Set between 7 to 9 N·m, R 1/4: 12 to 14 N·m respectively.

Note 2) Water is not an acceptable fluid. When using the other fluids, please consult with SMC for compatibility information concerning corrosion.

Note 3) Set value of pressure switch is indicated by pointer (green). It is the point where the circuit between N.O. (white) and COM (black) is turned off during pressure decrease. To set the value, turn needle in clockwise position to the correct value. When setting: if desired set position has been passed, turn needle in a counterclockwise direction back again beyond the desired value and then once again return needle in a clockwise direction stopping at the desired value. Value must be set while needle is traveling in a clockwise direction.

Note 4) Make sure to provide a minimum difference of 0.1 MPa between the set pressure and the operating pressure (including the pressure drop). If the difference is smaller, it could lead to improper operation. Refer to page 738 for details on how to set the setting needle. Use caution: Operating pressure should be the sum of the pressure of the setting needle error (±0.03 MPa), the hysteresis (0.07 MPa), and the display accuracy (±0.05 MPa) on the set pressure value, or the circuit between N.O. (white) and COM (black) may not turn ON while pressure is increasing.

Note 5) Maximum error value: Add the pressure gauge indicator error of 0.03 MPa to the setting needle error.

Note 6) Avoid freezing as this may cause a malfunction.

Note 7) The guaranteed temperature range is 23±5°C.

Model (Standard)

Model	Pressure range ⁽¹⁾	Indication unit	Connection thread	Note
	MPa			
GP46-10-01 to 02 (-Q)	0 to 1.0	MPa	R 1/8 R 1/4	—
GP46-10-01 to 02L2 (-Q)				
GP46-10-01 to 02L5 (-Q)				

Note 1) Do not apply pressure more than the maximum display pressure. This will cause a malfunction.

Model (Made to Order)

Other versions of this unit can be made on a Made-to-Order basis.
Please consult with SMC for details, as delivery times may be extended.

Model	Pressure range ⁽¹⁾		Indication unit	Connection thread	Note
	MPa	psi			
GP46-10-01 to 02-X201 (-Q)	0 to 1.0	—	MPa	R 1/8 R 1/4	Lead wire length 3 m
GP46-10-01 to 02L2-X201 (-Q)					
GP46-10-01 to 02L5-X201 (-Q)					
GP46-P10-01 to 02-X30 (-Q) ⁽²⁾	0 to 1.0	0 to 140	MPa, psi	R 1/8 R 1/4	—
GP46-P10-01 to 02L2-X30 ⁽²⁾					
GP46-P10-01 to 02L5-X30 ⁽²⁾					

Note 1) Do not apply pressure more than the maximum display pressure. This will cause a malfunction.

Note 2) Under the New Measurement Law, products for overseas use only (SI unit type for use in Japan)

Micro-switch Rated Voltage

Load	Load resistant		
Rated voltage	30 VDC	125 VAC	250 VAC
Operating current range	0.01 to 0.5 A	0.01 to 0.3 A	0.01 to 0.2 A



How to Order

GP 46 - **10** - **01** - -

1 2 3 4 5 6

Pressure gauge with switch

	Symbol	Description	GP46
	+		
1 Max. display pressure	10 P10 ⁽¹⁾	1.0 MPa 1.0 MPa, 150 psi	● ○ ⁽²⁾
	+		
2 Connection thread	01 02	R 1/8 R 1/4	● ●
	+		
3 Option	Nil M ⁽³⁾	— With M5 (Female thread)	● ●
	+		
4 Suffix for indicator light <small>Note 4)</small>	Nil L2 L5	Without indicator light Neon light (100 VAC/220 VAC) LED/24 VDC	● ● ●
	+		
5 Attachment <small>Note 5)</small>	Nil C	Without cover ring assembly Clear cover has no protrusion. (Clear cover is irremovable.)	● ●
	+		
6 Special specification	Nil X30 X201 Q ⁽⁶⁾	— Both MPa and psi Lead wire length 3 m Compliant with CE marking	● ○ ⁽²⁾ ● ●

Note 1) This symbol must be used with Special specification "X30."

Note 2) Under the New Measurement Law, products for overseas use only (SI unit type for use in Japan)

Note 3) To use the pressure gauge with M5 (female thread), attach the joint when piping the tube. For combinations with the special specification products, please consult SMC separately.

Note 4) Please consult with SMC for X30. 220 VAC is not available for -Q.

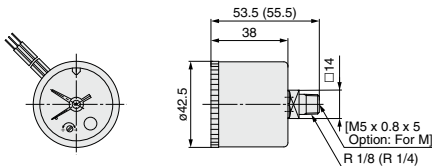
Note 5) Option C1: Clear cover has protrusion (Clear cover is removable.) is not compliant. For pressure gauges with the cover ring assembly, it is recommended to select the option M so as to perform the piping.

Note 6) The rated micro switch for CE marked products is under the following conditions.

Load	Load resistant	
Rated voltage	30 VDC	125 VAC
Operating current range	0.01 to 0.5 A	0.01 to 0.3 A

Dimensions (-Q: With ground terminal on back side) * The dimensions in (): Connection thread R 1/4

GP46-10-01 to 02 (M) (L2,5)

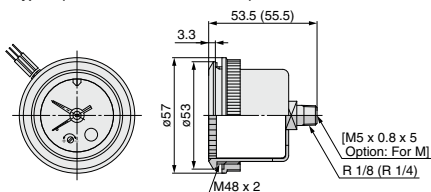


* The dimensions in (): Connection thread R 1/4

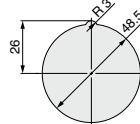
With cover ring assembly (For panel mount)

GP46-10-01 to 02 (M) (L2,5)-C

Type C (Clear cover is not removable.)



Panel fitting dimensions
Plate thickness Max. 3.5 t



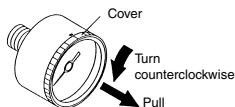
Refer to page 738 for mounting method.

Pressure Gauge Guide

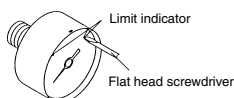
Procedures for Setting and Assembling

Procedure for Setting the Limit Gauge Indicator

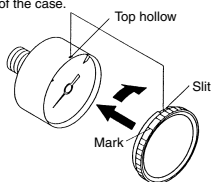
- (1) Before setting the (green) limit indicator, turn the cover counterclockwise (approximately 6 to 7 mm) until it stops. Then, remove by pulling it towards you.



- (2) Use a flat head screwdriver (with a 2.9 mm blade width) to set the (green) limit indicator. Be careful not to bend the other needle or damage the dial plate.

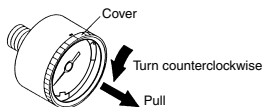


- (3) After completing the setting, replace the cover.
Fit the cover by aligning the cutout in the cover to the groove on the top of the black case. Turn the cover clockwise (approximately 6 to 7 mm) until it stops. Make sure that the matching mark on the cover is aligned with the groove on the top of the case.

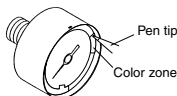


Procedure for Setting the Limit Gauge Indicator (Color Zone Type)

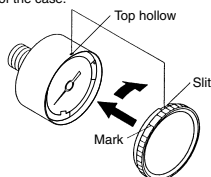
- (1) Before setting the color zone (red), turn the cover counterclockwise (approximately 6 to 7 mm) until it stops. Then remove by pulling it towards you.



- (2) Use a pen tip to set the color zone (red). Be careful not to bend the other needle or damage the dial plate.

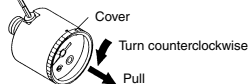


- (3) After completing the setting, replace the cover.
Fit the cover by aligning the cutout in the cover to the groove on the top of the black case. Turn the cover clockwise (approximately 6 to 7 mm) until it stops. Make sure that the matching mark on the cover is aligned with the groove on the top of the case.

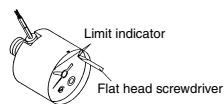


Procedure for Setting the Limit Gauge Indicator and the Setting Needle

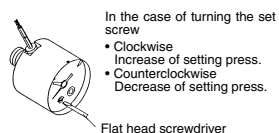
- (1) Before setting the limit indicator and the (green) setting needle, turn the cover counterclockwise (approximately 6 to 7 mm) until it stops. Then, remove by pulling it towards you.



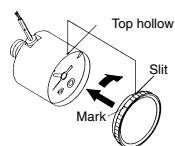
- (2) Use a flat head screwdriver (with a 2.9 mm blade width) to set the (green) limit indicator. Be careful not to bend the other needle or damage the dial plate.



- (3) Before setting the setting needle, use a flat head screwdriver (with a 2.9 mm blade width) to turn the setting screw and set the setting needle to the set pressure.

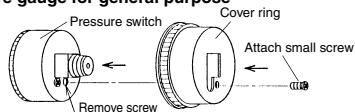


- (4) After completing the setting, replace the cover.
Fit the cover by aligning the cutout in the cover to the groove on the top of the black case. Turn the cover clockwise (approximately 6 to 7 mm) until it stops. Make sure that the matching mark on the cover is aligned with the groove on the top of the case.

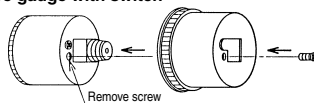


Procedure for Assembling the Cover Ring Assembly

● Pressure gauge for general purpose



● Pressure gauge with switch



1. Remove the small screw (1 position) from the pressure gauge.
2. Place the cover ring on the pressure gauge.
3. Using the small screw that is provided with the cover ring, install the cover ring. The installation torque is 0.3 to 0.5 N·m.



Pressure Gauge Guide

Specific Product Precautions

Be sure to read this before handling.
Refer to front matter 56 for safety Instructions.

Selection

Caution

1. Do not apply high load voltage (current) or surge current as this can cause the switch to malfunction.
2. Make sure that no direct impact or vibrations are applied to the body.
3. If operating under pressure pulsations or in high frequency operations, please contact SMC.

Mounting

Caution

1. During transport and installation, do not apply shock to the product, such as by dropping doing so will affect its precision.
2. Regarding the installation posture, place it perpendicular to the ground, with the zero point on the reading of a pressure gauge facing down.
3. Do not install it in an area that is exposed to high temperature or humidity, because doing so will lead to improper operation.
4. To screw in the pressure gauge, make sure to turn the gauge by placing a wrench over the square wrench flats.

If the pressure gauge is screwed in by holding it on some other area, air leakage or damage may result.

G

GS

PPA