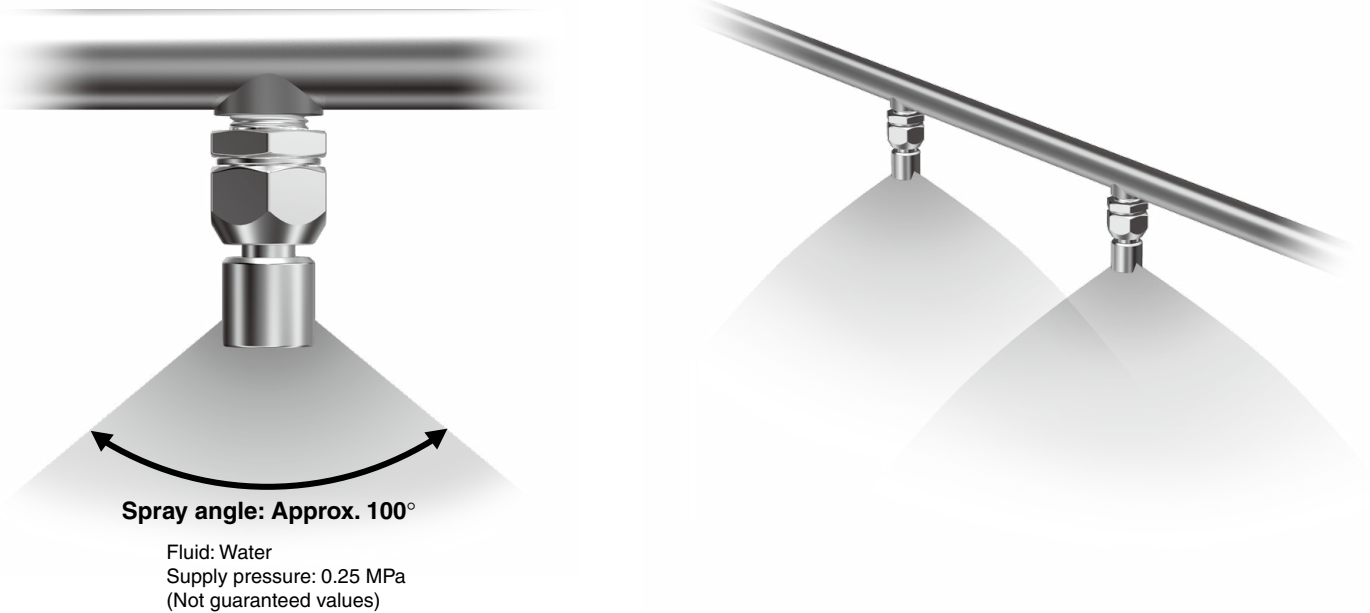


Wide Angle Blow Nozzle

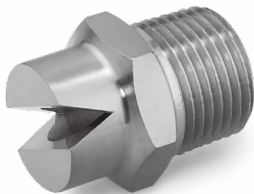


■ Capable of spraying a wide area with fluid



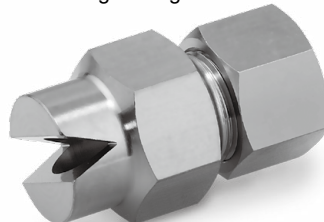
Variations

With male thread



IN-225-1054

With self-align fitting



IN-225-1056/1057/1059

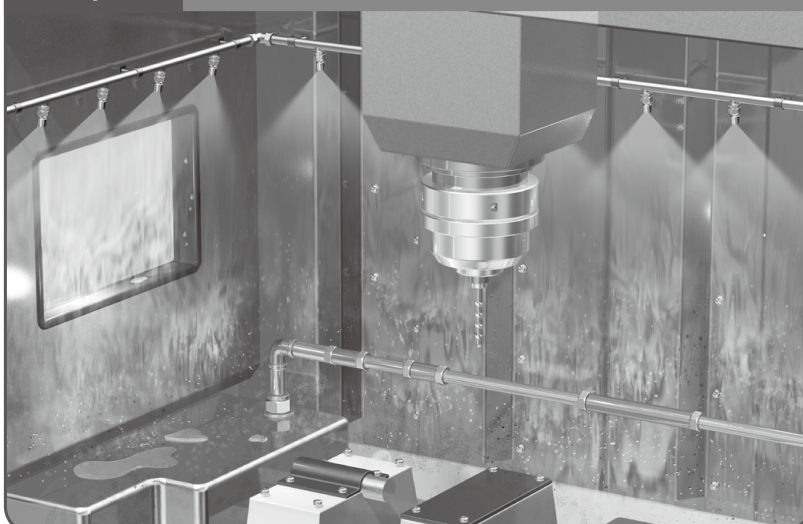
Pivot nozzle with male thread



IN-225-1104

Application Example

For the rinsing off of cutting chips adhered to the walls in rooms where machine tool processing is conducted



IN-225 Series



18-E703 [Ⓐ]

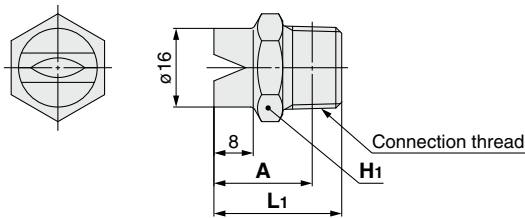
IN-225 Series

Specifications

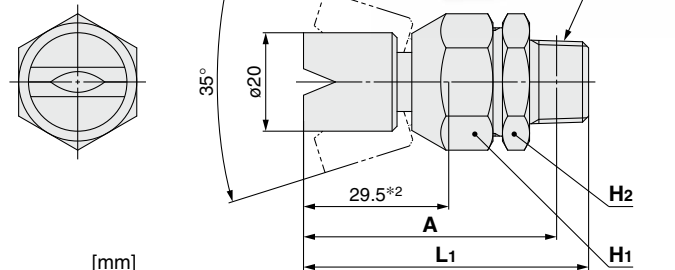
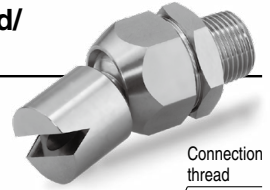
Applicable tubing material		Flexible copper pipe (C1220T-O), OST pipe
Applicable tubing O.D.		ø10, ø12, ø16
Fluid		Coolant, Water, Air*1
Operating pressure	Coolant, Water	0.3 MPa
	Air	1 MPa (0.3 MPa when connecting an OST pipe)
Ambient and fluid temperatures		-5 to 60°C (No freezing)
Seal on the threads		None
Material		Brass (With electroless nickel plating)

*1 For air, the blow will not be visibly fan shaped.

Nozzle with male thread/ IN-225-1054



Pivot nozzle with male thread/ IN-225-1104



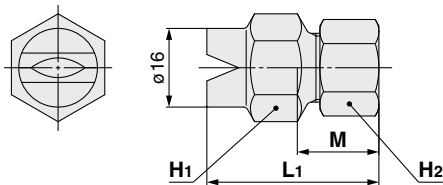
[mm]

Model	Nozzle size	Connection thread	Width across flats		L1	A*1	Weight [g]
			H1	H2			
IN-225-1054	ø6 equivalent	R3/8	19	—	26	20	28
IN-225-1104	ø6 equivalent	R3/8	24	24	58	51.4	109

*1 Reference dimensions after R thread installation

*2 Indicates the length of the arc from the center axis of the joint

Nozzle with self-align fitting/ IN-225-1056/1057/1059



IN-225-1056



IN-225-1057

IN-225-1059

[mm]

Model	Nozzle size	Applicable tubing O.D.	Width across flats		L1	M	Weight [g]
			H1	H2			
IN-225-1056	ø6 equivalent	ø12	19	19	28.3	17	34
IN-225-1057	ø6 equivalent	ø16	24	24	28.3	17	50
IN-225-1059	ø6 equivalent	ø10	19	17	35	17	47

⚠ Safety Instructions Be sure to read the "Handling Precautions for SMC Products" (M-E03-3) and "Operation Manual" before use.