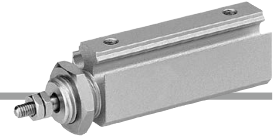


Pin Cylinder: Double Acting, Single Rod

25A-CJP2 Series

∅4, ∅6, ∅10, ∅16



How to Order

25A - CDJP2 F 10 - 15 D - [] - M9BW S

Series compatible with secondary batteries

With auto switch (Built-in magnet)

Mounting

Symbol	Mounting	Standard	Built-in magnet
B	Basic	●	●
F	Flange	●	●
L	Foot	●	●
D	Clevis	●	●
T	Trunnion	●	●

- * Bore size of 4 mm is available with basic mounting only.
- * Mounting brackets are shipped together with the product but do not come assembled.
- * Trunnion mounting type is shipped after assembled.

Bore size

4	4 mm
6	6 mm
10	10 mm
16	16 mm

Number of auto switches

Nil	2
S	1

Auto switch

Nil	Without auto switch
-----	---------------------

* [Click here](#) for details on applicable auto switch models.

Rod end thread

Nil	With thread
B	Without thread

Double acting

Cylinder standard stroke

Bore size [mm]	Stroke [mm]
4	5, 10, 15, 20*1
6	5, 10, 15, 20, 25
10, 16	5, 10, 15, 20, 25, 30, 35, 40

*1 20 stroke of bore size 4 mm is standard type only.

Built-in Magnet Cylinder Model

If a built-in magnet cylinder without an auto switch is required, there is no need to enter the symbol for the auto switch.
(Example) 25A-CDJP2F10-15D

Mounting Bracket Part Nos. for the 25A- Series

Bore size [mm]	Flange	Foot	Trunnion
6	25A-CP-F006A	25A-CP-L006A	25A-CP-T006A
10	25A-CP-F010A	25A-CP-L010A	25A-CP-T010A
16	25A-CP-F016A	25A-CP-L016A	25A-CP-T016A

Accessory Bracket Part Nos. for the 25A- Series

Bore size [mm]	Single knuckle joint	Double knuckle joint	Knuckle joint pin	Trunnion pin	Mounting nut	Rod end nut
4	—	—	—	—	25A-SNPS-004	25A-NTJ-004
6	25A-I-P006A	25A-Y-P006A	25A-IY-P006	25A-CT-P006	25A-SNP-006	25A-NTP-006
10	25A-I-P010A	25A-Y-P010A	25A-IY-P010	25A-CT-P010	25A-SNP-010	25A-NTP-010
16	25A-I-P016A	25A-Y-P016A	25A-IY-P016	25A-CT-P016	25A-SNP-016	25A-NTP-016

* The 25A- series specifications and dimensions are the same as those of the standard model.

For details, refer to the [Web Catalog](#).

Air Cylinder: Standard Type Double Acting, Single Rod

25A-CJ2 Series

ø10, ø16



How to Order

25A-C **D** **J2** **L** **16** - **60** **A** **Z** - **M9BW** **B**

Series compatible with secondary batteries

With auto switch

Nil	Without magnet for switch*1
D	With auto switch (Built-in magnet)

*1 In the case of without magnet for switch, auto switch cannot be mounted.

Mounting

B	Basic
E	Double-side bossed
D	Double clevis
L	Single foot
M	Double foot
F	Rod flange
G	Head flange

* Mounting brackets are shipped together with the product but do not come assembled.

Bore size

10	10 mm
16	16 mm

Cylinder standard stroke [mm]

10	15, 30, 45, 60, 75, 100, 125, 150
16	15, 30, 45, 60, 75, 100, 125, 150, 175, 200

* The manufacturing of intermediate strokes in 1 mm increments is possible. (Spacers are not used.)

Auto switch mounting type

B	Band mounting
---	---------------

* Refer to page 323 for auto switch mounting brackets.

Number of auto switches

Nil	2
S	1
n	n



Auto switch

Nil	Without auto switch
-----	---------------------

* [Click here](#) for details on applicable auto switch models.

* Enter the auto switch mounting type (B) even when a built-in magnet cylinder without an auto switch is required.

Head cover port location

Bore size [mm]	ø10, ø16	
Symbol	Nil	Perpendicular to axis 
	R	Axial 

* Double clevis is only available for being perpendicular to axis.

* Double-side bossed type is only available for being perpendicular to axis.

Cushion

Nil	Rubber bumper
A	Air cushion

Mounting Bracket Part Nos. for the 25A- Series

Mounting bracket	Bore size [mm]	
	10	16
Foot bracket	25A-CJ-L010B	CJ-L016SUS
Flange bracket	25A-CJ-F010B	CJ-F016SUS

* The 25A- series specifications and dimensions are the same as those of the standard model.

For details, refer to the [Web Catalog](#).

Air Cylinder: Non-rotating Rod Type Double Acting, Single Rod

25A-CJ2K Series

ø10, ø16

RoHS



How to Order

25A - C D J2K L 16 - 60 Z - M9BW - B

Series compatible with secondary batteries

With auto switch

Nil	Without magnet for switch*1
D	With auto switch (Built-in magnet)

*1 In the case of without magnet for switch, auto switch cannot be mounted.

Mounting

B	Basic
E	Double-side bossed
D	Double clevis
L	Single foot
M	Double foot
F	Rod flange
G	Head flange

* Mounting brackets are shipped together with the product but do not come assembled.

Bore size

10	10 mm
16	16 mm

Cylinder standard stroke [mm]

10	15, 30, 45, 60, 75, 100, 125, 150
16	15, 30, 45, 60, 75, 100, 125, 150, 175, 200

* The manufacturing of intermediate strokes in 1 mm increments is possible. (Spacers are not used.)

Auto switch mounting type

B	Band mounting
---	---------------

* Refer to page 323 for auto switch mounting brackets.

Number of auto switches

Nil	2
S	1
n	n



Auto switch

Nil	Without auto switch
-----	---------------------

* [Click here](#) for details on applicable auto switch models.

* Enter the auto switch mounting type (B) even when a built-in magnet cylinder without an auto switch is required.

Head cover port location

Bore size [mm]	ø10, ø16	
Symbol	Nil	Perpendicular to axis 
	R	Axial 

* Double clevis is only available for being perpendicular to axis.

* Double-side bossed type is only available for being perpendicular to axis.

Mounting Bracket Part Nos. for the 25A- Series

Mounting bracket	Bore size [mm]	
	10	16
Foot bracket	CJ-L016SUS	CJK-L016SUS
Flange bracket	CJ-F016SUS	CJK-F016SUS

* The 25A- series specifications and dimensions are the same as those of the standard model. (Excluding the foot and flange plate thickness)

For details, refer to the [Web Catalog](#).

Air Cylinder: With End Lock

25A-CBJ2 Series

ø16



How to Order



25A - CBJ2 L 16 - 60 - H N

With auto switch **25A - CDBJ2 L 16 - 60 - H N - M9BW**

Series compatible with secondary batteries

With auto switch (Built-in magnet)

Mounting

B	Basic
L	Axial foot
F	Rod flange
D	Double clevis*1

*1 Rod end lock only
* Foot/Flange brackets are shipped together with the product but do not come assembled.

Cylinder standard stroke [mm]

Bore size	Standard stroke
16	15, 30, 45, 60, 75, 100, 125, 150, 175, 200

* The manufacturing of intermediate strokes in 1 mm increments is possible. (Spacers are not used.)

Lock position

H	Head end lock
R	Rod end lock

Manual release

N	Non-locking type
----------	------------------

Auto switch

Nil	Without auto switch
------------	---------------------

* [Click here](#) for details on applicable auto switch models.

Number of auto switches

Nil	2
S	1
n	n

How to order built-in magnet type (Without auto switch)

Suffix the symbol "B" (Band mounting) to the end of part number for cylinder with auto switch.

Example	25A-CDBJ2B16-60-HN-B
---------	----------------------

Mounting Bracket Part Nos. for the 25A- Series

Mounting bracket	Bore size [mm]
	16
Foot bracket	CJ-L016SUS
Flange bracket	CJ-F016SUS

* The 25A- series specifications and dimensions are the same as those of the standard model. For details, refer to the [Web Catalog](#).

Air Cylinder: Standard Type Double Acting, Single Rod

25A-CM2 Series

∅20, ∅25, ∅32, ∅40



How to Order

25A - C D M2 L 40 - 150 A Z1 - M9BW

Series compatible with secondary batteries

With auto switch

Nil	Without magnet for switch*1
D	With auto switch (Built-in magnet)

*1 In the case of without magnet for switch, auto switch cannot be mounted.

Mounting

B	Basic (Double-side bossed)
L	Axial foot
F	Rod flange
G	Head flange
C	Single clevis
D	Double clevis
U	Rod trunnion
T	Head trunnion
E	Integrated clevis
V	Integrated clevis (90°)
BZ	Boss-cut/Basic
FZ	Boss-cut/Rod flange
UZ	Boss-cut/Rod trunnion

Bore size

20	20 mm
25	25 mm
32	32 mm
40	40 mm

Built-in Magnet Cylinder Model

If a built-in magnet cylinder without an auto switch is required, there is no need to enter the symbol for the auto switch.

(Example) 25A-CDM2F32-100AZ1

Number of auto switches

Nil	2
S	1
n	n

Auto switch

Nil	Without auto switch
-----	---------------------

* Click here for details on applicable auto switch models.

Rod end thread

Nil	Male rod end
F	Female rod end

Cushion

Nil	Rubber bumper
A	Air cushion

Cylinder Stroke [mm]

Bore size	Standard stroke*1	Manufacturable stroke
20	25, 50, 75, 100, 125, 150 200, 250, 300	5 to 1000
25		5 to 1500
32		5 to 2000
40		

*1 Other intermediate strokes can be manufactured upon receipt of order. The manufacturing of intermediate strokes in 1 mm increments is possible. (Spacers are not used.)

* Applicable strokes should be confirmed according to the usage. For details, refer to the "Air Cylinders Model Selection" in the **Web Catalog**. In addition, the products that exceed the standard stroke might not be able to fulfill the specifications due to deflection, etc.

* Using a stroke of a length which is smaller than the effective cushion length may result in reduced air cushion performance. Refer to "Technical Data 1" in the **Web Catalog** for details on the effective cushion length.

Port thread type

Nil	Rc
TN	NPT
TF	G

Mounting Bracket Part Nos. for the 25A- Series

Mounting bracket	Min. order	Bore size [mm]				Description (for min. order)
		20	25	32	40	
Axial foot*1	2	CM-L020B-XB12	CM-L032B-XB12	CM-L040B-XB12		2 foot brackets, 1 mounting nut
Flange	1	CM-F020BSUS	CM-F032BSUS	CM-F040BSUS		1 flange
Single clevis*2	1	CM-C020B	CM-C032B	CM-C040B		1 single clevis, 3 liners
Double clevis*2*3 (with pin)	1	25A-CM-D020B	25A-CM-D032B	25A-CM-D040B		1 double clevis, 3 liners, 1 clevis pin, 2 retaining rings
Trunnion (with nut)	1	25-CM-T020B	25-CM-T032B	25-CM-T040B		1 trunnion, 1 trunnion nut

*1 Order 2 foot brackets for each cylinder unit.

*2 3 liners are attached with a clevis bracket for adjusting the mounting angle.

*3 A clevis pin and retaining rings (split pins for ∅40) are attached.

* The 25A- series specifications and dimensions are the same as those of the standard model.

For details, refer to the **Web Catalog**.

Air Cylinder: Standard Type Double Acting, Single Rod

25A-CM2 Series

∅20, ∅25, ∅32, ∅40

RoHS



How to Order

25A-C D M2 L 40 - 150 A Z-M9BW

Series compatible with secondary batteries

With auto switch

Nil	Without magnet for switch*1
D	With auto switch (Built-in magnet)

*1 In the case of without magnet for switch, auto switch cannot be mounted.

Mounting

B	Basic
L	Axial foot
F	Rod flange
G	Head flange
C	Single clevis
D	Double clevis
U	Rod trunnion
T	Head trunnion
E	Integrated clevis
V	Integrated clevis (90°)
BZ	Boss-cut/Basic
FZ	Boss-cut/Rod flange
UZ	Boss-cut/Rod trunnion

Bore size

20	20 mm
25	25 mm
32	32 mm
40	40 mm

Port thread type

Nil	Rc
TN	NPT
TF	G

Number of auto switches

Nil	2
S	1
n	n

Auto switch

Nil	Without auto switch
-----	---------------------

* Click here for details on applicable auto switch models.

Rod end thread

Nil	Male rod end
F	Female rod end

Cushion

Nil	Rubber bumper
A	Air cushion

Cylinder Stroke [mm]

Bore size	Standard stroke*1	Maximum stroke
20		1000
25	25, 50, 75, 100, 125, 150	1500
32	200, 250, 300	2000
40		2000

*1 Other intermediate strokes can be manufactured upon receipt of order. The manufacturing of intermediate strokes in 1 mm increments is possible. (Spacers are not used.)

* When exceeding 300 strokes, the allowable maximum stroke length is determined by the stroke selection table (Web Catalog).

Built-in Magnet Cylinder Model

If a built-in magnet cylinder without an auto switch is required, there is no need to enter the symbol for the auto switch.

(Example) 25A-CDM2F32-100AZ

Mounting Bracket Part Nos. for the 25A- Series

Mounting bracket	Min. order	Bore size [mm]				Description (for min. order)
		20	25	32	40	
Axial foot*1	2	CM-L020B-XB12	CM-L032B-XB12	CM-L040B-XB12		2 foot brackets, 1 mounting nut
Flange	1	CM-F020BSUS	CM-F032BSUS	CM-F040BSUS		1 flange
Single clevis*2	1	CM-C020B	CM-C032B	CM-C040B		1 single clevis, 3 liners
Double clevis*2*3 (with pin)	1	25A-CM-D020B	25A-CM-D032B	25A-CM-D040B		1 double clevis, 3 liners, 1 clevis pin, 2 retaining rings
Trunnion (with nut)	1	25-CM-T020B	25-CM-T032B	25-CM-T040B		1 trunnion, 1 trunnion nut

*1 Order 2 foot brackets for each cylinder unit.

*2 3 liners are attached with a clevis bracket for adjusting the mounting angle.

*3 A clevis pin and retaining rings (split pins for ∅40) are attached.

* The 25A- series specifications and dimensions are the same as those of the standard model.

For details, refer to the Web Catalog.

Air Cylinder: Standard Type Double Acting, Single Rod

RoHS

25A-CG1 Series

∅20, ∅25, ∅32, ∅40, ∅50, ∅63, ∅80, ∅100



How to Order

25A-C D G1 L N 25 - 100 Z-M9BW

Series compatible with secondary batteries

With auto switch

Nil	Without magnet for switch*1
D	With auto switch (Built-in magnet)

*1 In the case of without magnet for switch, auto switch cannot be mounted.

Mounting

B	Basic
Z*1	Basic (without trunnion mounting female thread)
L	Axial foot
F	Rod flange
G	Head flange
U*1	Rod trunnion
T*1	Head trunnion
D	Clevis

*1 Not available for ∅80 or ∅100.

* Mounting brackets are shipped together with the product but do not come assembled.

* The cylinder for F, G, L, D mounting types is Z: Basic (without trunnion mounting female thread).

Type

N	Rubber bumper
A	Air cushion

Bore size

20	20 mm
25	25 mm
32	32 mm
40	40 mm
50	50 mm
63	63 mm
80	80 mm
100	100 mm

Built-in Magnet Cylinder Model

If a built-in magnet cylinder without an auto switch is required, there is no need to enter the symbol for the auto switch.

(Example) 25A-CDG1FN32-100Z

Number of auto switches

Nil	2
S	1
n	n

Auto switch

Nil	Without auto switch
-----	---------------------

* Click here for details on applicable auto switch models.

Rod end thread

Nil	Rod end male thread
F	Rod end female thread

Cylinder stroke [mm]

Bore size [mm]	Standard stroke*1 [mm]	Long stroke*2 [mm]
20	25, 50, 75, 100, 125, 150, 200	201 to 1500
25	25, 50, 75, 100, 125, 150, 200, 250, 300	301 to 1500
32		
40		
50, 63		
80		
100		

*1 Other intermediate strokes can be manufactured upon receipt of order. The manufacturing of intermediate strokes in 1 mm increments is possible. (Spacers are not used.)

*2 For details on the maximum stroke that can be used for each mounting bracket, refer to the stroke selection table (Web Catalog).

Port thread type

Rubber bumper

Nil	Rc	∅20 to ∅100
TN	NPT	∅20 to ∅100
TF	M5 x 0.8	∅20, ∅25
	G	∅32 to ∅100

Air cushion

M5 x 0.8	∅20, ∅25
Rc	∅32 to ∅100
NPT*1	∅32 to ∅100
G*1	∅32 to ∅100

*1 Not available for ∅20 and ∅25.

Mounting Bracket Part Nos. for the 25A- Series

* The rod end brackets are the same as those of the CG5-S series. Refer to the Web Catalog for details.

Mounting bracket	Min. order	Bore size [mm]								Description
		20	25	32	40	50	63	80	100	
Foot	2*1	90-CG-L020	90-CG-L025	90-CG-L032	90-CG-L040	90-CG-L050	25-CG-L063	25-CG-L080	25-CG-L100	Foot x 2, Mounting bolt x 8
Flange	1	90-CG-F020	90-CG-F025	90-CG-F032	90-CG-F040	90-CG-F050	25-CG-F063	25-CG-F080	25-CG-F100	Flange x 1, Mounting bolt x 4
Trunnion pin	1	25-CG-T020	25-CG-T025	25-CG-T032	25-CG-T040	25-CG-T050	25-CG-T063	—	—	Trunnion pin x 2, Trunnion bolt x 2, Flat washer x 2
Clevis	1	25-CG-D020	25-CG-D025	25-CG-D032	25-CG-D040	25-CG-D050	25-CG-D063	25-CG-D080	25-CG-D100	Clevis x 1, Mounting bolt x 4, Clevis pin x 1, Retaining ring x 2
Pivot bracket	1	25-CG-020-24A	25-CG-025-24A	25-CG-032-24A	25-CG-040-24A	25-CG-050-24A	25-CG-063-24A	25-CG-080-24A	25-CG-100-24A	Pivot bracket x 1

*1 Order two foot brackets per cylinder.

* The 25A- series specifications and dimensions are the same as those of the standard model.

For details, refer to the Web Catalog.

Air Cylinder: With End Lock

RoHS

25A-CBG1 Series

∅20, ∅25, ∅32, ∅40, ∅50, ∅63

How to Order



25A - CBG1 L N 25 - 100 - H N

25A - CDBG1 L N 25 - 100 - H N - M9BW

Series compatible with secondary batteries

With auto switch (Built-in magnet)

Mounting

B	Basic
L	Axial foot
F	Rod flange
G	Head flange
U*1	Rod trunnion
T*1	Head trunnion
D	Clevis

*1 The trunnion cannot be attached on the side to which an end lock is attached.

* Mounting brackets are shipped together with the product but do not come assembled.

Type

N	Rubber bumper
---	---------------

Bore size

20	20 mm
25	25 mm
32	32 mm
40	40 mm
50	50 mm
63	63 mm

Cylinder stroke [mm]

Bore size	Standard stroke*1	Long stroke*2
20	25, 50, 75, 100, 125, 150, 200	201 to 1500
25	25, 50, 75, 100, 125, 150, 200, 250, 300	301 to 1500
32		
40		
50, 63		

*1 Other intermediate strokes can be manufactured upon receipt of order. The manufacturing of intermediate strokes in 1 mm increments is possible. (Spacers are not used.)

*2 For details on the maximum stroke that can be used for each mounting bracket, refer to the stroke selection table ([Web Catalog](#)).

Number of auto switches

Nil	2
S	1
n	n

Auto switch

Nil	Without auto switch
-----	---------------------

* [Click here](#) for details on applicable auto switch models.

Manual release

N	Non-locking type
---	------------------

Lock position

H	Head end lock
R	Rod end lock
W	Double end lock

Built-in Magnet Cylinder Model

If a built-in magnet cylinder without an auto switch is required, there is no need to enter the symbol for the auto switch.

(Example) 25A-CDBG1FN32-100-RN

Mounting Bracket Part Nos. for the 25A- Series

* The rod end brackets are the same as those of the CG5-S series. Refer to the [Web Catalog](#) for details.

Mounting bracket	Min. order	Bore size [mm]						Description
		20	25	32	40	50	63	
Foot	2*1	90-CG-L020	90-CG-L025	90-CG-L032	90-CG-L040	90-CG-L050	25-CG-L063	Foot x 2, Mounting bolt x 8
Flange	1	90-CG-F020	90-CG-F025	90-CG-F032	90-CG-F040	90-CG-F050	25-CG-F063	Flange x 1, Mounting bolt x 4
Trunnion pin	1	25-CG-T020	25-CG-T025	25-CG-T032	25-CG-T040	25-CG-T050	25-CG-T063	Trunnion pin x 2, Trunnion bolt x 2, Flat washer x 2
Clevis	1	25-CG-D020	25-CG-D025	25-CG-D032	25-CG-D040	25-CG-D050	25-CG-D063	Clevis x 1, Mounting bolt x 4, Clevis pin x 1, Retaining ring x 2
Pivot bracket	1	25-CG-020-24A	25-CG-025-24A	25-CG-032-24A	25-CG-040-24A	25-CG-050-24A	25-CG-063-24A	Pivot bracket x 1

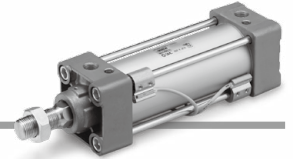
*1 Order two foot brackets per cylinder. * The 25A- series specifications and dimensions (excluding the cap) are the same as those of the standard model.

For details, refer to the [Web Catalog](#).

Air Cylinder: Single Rod

25A-MB Series

∅32, ∅40, ∅50, ∅63, ∅80, ∅100



How to Order

25A-M D B L 32 - 50 Z - M9BW

Series compatible with secondary batteries

With auto switch

Nil	Without magnet for switch*1
D	With auto switch (Built-in magnet)

*1 In the case of without magnet for switch, auto switch cannot be mounted.

Mounting

B	Basic
L	Axial foot
F	Rod flange
G	Head flange
C	Single clevis
D	Double clevis
T	Center trunnion

Bore size

32	32 mm
40	40 mm
50	50 mm
63	63 mm
80	80 mm
100	100 mm

Cylinder stroke [mm]

Bore [mm]	Standard stroke [mm]
32	25, 50, 75, 100, 125, 150, 175, 200, 250, 300, 350, 400, 450, 500
40	25, 50, 75, 100, 125, 150, 175, 200, 250, 300, 350, 400, 450, 500
50	25, 50, 75, 100, 125, 150, 175, 200, 250, 300, 350, 400, 450, 500, 600
63	25, 50, 75, 100, 125, 150, 175, 200, 250, 300, 350, 400, 450, 500, 600
80	25, 50, 75, 100, 125, 150, 175, 200, 250, 300, 350, 400, 450, 500, 600, 700, 800
100	25, 50, 75, 100, 125, 150, 175, 200, 250, 300, 350, 400, 450, 500, 600, 700, 800

* Intermediate strokes are available. (No spacer is used.)

Number of auto switches

Nil	2
S	1
3	3
n	n

Auto switch

Nil	Without auto switch
-----	---------------------

* [Click here](#) for details on applicable auto switch models.

Port thread type

Nil	Rc
TN	NPT
TF	G

Built-in Magnet Cylinder Model

If a built-in magnet cylinder without an auto switch is required, there is no need to enter the symbol for the auto switch. (Example) 25A-MDBB40-100Z

* The 25A- series specifications and dimensions are the same as those of the standard model.

For details, refer to the [Web Catalog](#).

Mounting Bracket Part Nos. for the 25A- Series

Bore size [mm]	32	40	50	63	80	100
Foot*1	25-MB-L03	25-MB-L04	25-MB-L05	25-MB-L06	25-MB-L08	25-MB-L10
Flange	MB-F03-XC7	MB-F04-XC7	MB-F05-XC7	MB-F06-XC7	MB-F08-XC7	MB-F10-XC7
Single clevis	25-MB-C03	25-MB-C04	25-MB-C05	25-MB-C06	25-MB-C08	25-MB-C10
Double clevis	25-MB-D03	25-MB-D04	25-MB-D05	25-MB-D06	25-MB-D08	25-MB-D10
Single knuckle joint	25A-I-03M	25A-I-04M	25A-I-05M	25A-I-05M	25A-I-08M	25A-I-10M
Double knuckle joint	25A-Y-03M	25A-Y-04M	25A-Y-05M	25A-Y-05M	25A-Y-08M	25A-Y-10M
Double clevis pin Double knuckle joint pin	25-CD-M03	25-CD-M03	25-CD-M05	25-CD-M05	25-CD-M08	25-CD-M08
Rod end nut	NT-03SUS	NT-04SUS	NT-05SUS	NT-05SUS	NT-08SUS	NT-10SUS
Trunnion pivot bracket	25A-MB-S03	25A-MB-S04	25A-MB-S04	25A-MB-S06	25A-MB-S06	25A-MB-S10
Double clevis bracket	25A-MB-B03	25A-MB-B03	25A-MB-B05	25A-MB-B05	25A-MB-B08	25A-MB-B08

*1 Two foot brackets required for one cylinder.

* Accessories for each mounting bracket are as follows.

Foot, Flange, Single clevis: Body mounting bolt

Double clevis: Body mounting bolt, Pin, Flat washers and Split pins

Double knuckle joint: Pin, Flat washers and Split pins

Double clevis pin, Double knuckle joint pin: Flat washers and Split pins

Air Cylinder: Standard Type Double Acting, Single Rod

25A-CA2 Series

∅40, ∅50, ∅63, ∅80, ∅100



How to Order

25A-C D A2 L 50 - 100 Z - M9BW

Series compatible with secondary batteries

With auto switch

Nil	Without magnet for switch*1
D	With auto switch (Built-in magnet)

*1 In the case of without magnet for switch, auto switch cannot be mounted.

Mounting

B	Basic
L	Axial foot
F	Rod flange
G	Head flange
C	Single clevis
D	Double clevis
T	Center trunnion

Bore size

40	40 mm
50	50 mm
63	63 mm
80	80 mm
100	100 mm

Port thread type

Nil	Rc
TN	NPT
TF	G

Number of auto switches

Nil	2
S	1
3	3
n	n

Auto switch

Nil	Without auto switch
-----	---------------------

* Click here for details on applicable auto switch models.

Cylinder stroke [mm]

40	25, 50, 75, 100, 125, 150, 175, 200, 250, 300, 350, 400, 450, 500
50, 63	25, 50, 75, 100, 125, 150, 175, 200, 250, 300, 350, 400, 500, 600
80, 100	25, 50, 75, 100, 125, 150, 175, 200, 250, 300, 350, 400, 450, 500, 600, 700

* Intermediate strokes not listed above are produced upon receipt of order.

Built-in Magnet Cylinder Model

If a built-in magnet cylinder without an auto switch is required, there is no need to enter the symbol for the auto switch
(Example) 25A-CDA2L40-100Z

* The 25A-series specifications and dimensions are the same as those of the standard model.

For details, refer to the [Web Catalog](#).

Mounting Bracket Part Nos. for the 25A- Series

Bore size [mm]	40	50	63	80	100
Axial foot*1	90-CA2-L04	90-CA2-L05	90-CA2-L06	90-CA2-L08	90-CA2-L10
Flange	25A-CA2-F04	25A-CA2-F05	25A-CA2-F06	25A-CA2-F08	25A-CA2-F10
Single clevis	25A-CA2-C04	25A-CA2-C05	25A-CA2-C06	25A-CA2-C08	25A-CA2-C10
Double clevis	25A-CA2-D04	25A-CA2-D05	25A-CA2-D06	25A-CA2-D08	25A-CA2-D10
Single knuckle joint	I-04A	I-05A	I-05A	I-08A	I-10A
Double knuckle joint	25A-Y-04D	25A-Y-05D	25A-Y-05D	25A-Y-08D	25A-Y-10D
Clevis pin	25A-CDP-2A	25A-CDP-3A	25A-CDP-4A	25A-CDP-6A	25A-CDP-7A
Knuckle pin	25A-CDP-3A	25A-CDP-3A	25A-CDP-3A	25A-CDP-5A	25A-CDP-6A
Rod end nut	NT-04SUS	NT-05SUS	NT-05SUS	NT-08SUS	NT-10SUS
Trunnion pivot bracket	25A-CA2-S04	25A-CA2-S04	25A-CA2-S06	25A-MB-S10	25A-MB-S10
Double clevis bracket	25A-CA2-B04	25A-CA2-B05	25A-CA2-B06	25A-CA2-B08	25A-CA2-B10

*1 When axial foot brackets are used, two pieces should be ordered for each cylinder.

* Accessories for each mounting bracket are as follows.

Axial foot, Flange, Single clevis: Hexagon nut, Spring washer

Double clevis: Hexagon nut, Spring washer, Pin, Flat washers and Split pins

Double knuckle joint: Pin, Flat washers and Split pins

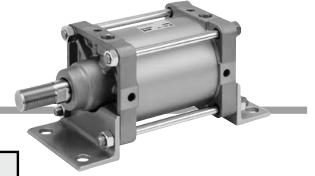
Clevis pin, Knuckle pin: Flat washers and Split pins

Air Cylinder: Standard Type Double Acting, Single Rod

25A-CS2 Series

RoHS

∅125, ∅140, ∅160, ∅180, ∅200, ∅250



How to Order

25A - C D S2 L 125 - 300 - M9BW

Series compatible with secondary batteries

With auto switch

Nil	Without magnet for switch*1
D	With auto switch (Built-in magnet)

*1 In the case of without magnet for switch, auto switch cannot be mounted.

Mounting

B	Basic
L	Foot
F	Rod flange
G	Head flange
C	Single clevis
D	Double clevis
T	Center trunnion

Bore size

125	125 mm
140	140 mm
160	160 mm
180	180 mm
200	200 mm
250	250 mm

Number of auto switches

Nil	2
3	3
S	1
n	n

Auto switch

Nil	Without auto switch
-----	---------------------

* Click here for details on applicable auto switch models.

Cylinder stroke [mm]

Bore size	Mounting bracket	Maximum stroke	
		Basic, Head flange, Single clevis, Double clevis, Center trunnion	Foot, Rod flange
125		1000 or less	1600 or less
140			
160		1200 or less	1569 or less
180			
200		998 or less	
250		813 or less	

Port thread type

Nil	Rc
TN	NPT
TF	G

Built-in Magnet Cylinder Model

If a built-in magnet cylinder without auto switch is required, there is no need to enter the symbol for auto switch.

(Example) 25A-CDS2B125-100

* The 25A- series specifications and dimensions are the same as those of the standard model.

For details, refer to the [Web Catalog](#).

Mounting Bracket Part Nos. for the 25A- Series

Bore size [mm]	125	140	160	180	200	250
Axial foot*1	CS2-L12	CS2-L14	CS2-L16	CS2-L18	CS2-L20	CS2-L25
Flange	CS2-F12	CS2-F14	CS2-F16	CS2-F18	CS2-F20	CS2-F25
Single clevis	CS2-C12	CS2-C14	CS2-C16	CS2-C18	CS2-C20	CS2-C25
Double clevis*2	25A-CS2-D12	25A-CS2-D14	25A-CS2-D16	25A-CS2-D18	25A-CS2-D20	25A-CS2-D25

*1 Order two foot brackets per cylinder.

*2 A clevis pin and split pins are shipped together with double clevis.

Cylinder with Lock

Double Acting, Single Rod

25A-MWB Series

∅32, ∅40, ∅50, ∅63, ∅80, ∅100



How to Order

With auto switch

25A - M **D** WB **B** **40** - **50** - **M9BW**

With auto switch

Nil	Without magnet for switch*1
D	With auto switch (Built-in magnet)

*1 In the case of without magnet for switch, auto switch cannot be mounted.

Number of auto switches

Nil	2
S	1
3	3
n	n

Mounting

B	Basic
L	Axial foot
F	Rod flange
G	Head flange
C	Single clevis
D	Double clevis
T	Center trunnion

* Mounting brackets other than center trunnion type are shipped together.

Bore size

32	32 mm
40	40 mm
50	50 mm
63	63 mm
80	80 mm
100	100 mm

Port thread type

Nil	Rc
TN	NPT
TF	G

Auto switch

Nil	Without auto switch
-----	---------------------

* [Click here](#) for details on applicable auto switch models.

Cylinder stroke [mm]

Bore size	Standard stroke	
	Stroke range ①	Stroke range ②
32	25, 50, 75, 100, 125, 150, 175, 200, 250, 300, 350, 400, 450, 500	Up to 1000
40	25, 50, 75, 100, 125, 150, 175, 200, 250, 300, 350, 400, 450, 500	Up to 1800
50	25, 50, 75, 100, 125, 150, 175, 200, 250, 300, 350, 400, 450, 500, 600	
63	25, 50, 75, 100, 125, 150, 175, 200, 250, 300, 350, 400, 450, 500, 600	
80	25, 50, 75, 100, 125, 150, 175, 200, 250, 300, 350, 400, 450, 500, 600, 700, 800	
100	25, 50, 75, 100, 125, 150, 175, 200, 250, 300, 350, 400, 450, 500, 600, 700, 800	

* The manufacturing of intermediate strokes is possible. (Spacers are not used.)

* The 25A- series specifications and dimensions are the same as those of the standard model.

For details, refer to the [Web Catalog](#).

Mounting Bracket Part Nos. for the 25A- Series

Bore size [mm]	32	40	50	63	80	100
Foot*1	25-MB-L03	25-MB-L04	25-MB-L05	25A-MWB-L06	25-MB-L08	25-MB-L10
Flange	25A-MWB-F03	25A-MWB-F04	25A-MWB-F05	25A-MWB-F06	MB-F08-XC7	MB-F10-XC7
Single clevis	25-MB-C03	25-MB-C04	25-MB-C05	25-MB-C06	25-MB-C08	25-MB-C10
Double clevis	25-MB-D03	25-MB-D04	25-MB-D05	25-MB-D06	25-MB-D08	25-MB-D10
Single knuckle joint	25A-I-03M	25A-I-04M	25A-I-05M	25A-I-05M	25A-I-08M	25A-I-10M
Double knuckle joint	25A-Y-03M	25A-Y-04M	25A-Y-05M	25A-Y-05M	25A-Y-08M	25A-Y-10M
Double clevis pin Double knuckle joint pin	25-CD-M03	25-CD-M03	25-CD-M05	25-CD-M05	25-CD-M08	25-CD-M08
Rod end nut	NT-03SUS	NT-04SUS	NT-05SUS	NT-05SUS	NT-08SUS	NT-10SUS
Trunnion pivot bracket	25A-MB-S03	25A-MB-S04	25A-MB-S04	25A-MB-S06	25A-MB-S06	25A-MB-S10
Double clevis bracket	25A-MB-B03	25A-MB-B03	25A-MB-B05	25A-MB-B05	25A-MB-B08	25A-MB-B08

*1 Two foot brackets required for one cylinder.

* Accessories for each mounting bracket are as follows.

Foot, Flange, Single clevis: Body mounting bolt

Double clevis: Body mounting bolt, Pin, Flat washers and Split pins

Double knuckle joint: Pin, Flat washers and Split pins

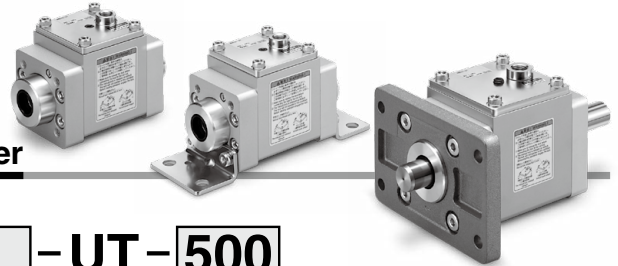
Double clevis pin, Double knuckle joint pin: Flat washers and Split pins

Lock Unit



25A-MWB-UT Series

32, 40, 50, 63, 80, 100



How to Order

25A - MWB B 40 [] - UT - 500

Series compatible with secondary batteries

Mounting

B	Basic
L	Axial foot
F	Flange

* Mounting bracket is shipped together with the product.

Model

Model	Applicable rod size
32	12 mm
40	16 mm
50	20 mm
63	20 mm
80	25 mm
100	30 mm

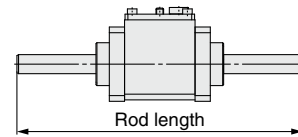
Port thread type

Nil	Rc
TN	NPT
TF	G

Rod length [mm]

Nil		Without accessory rod	
Min. length	Max. length	Applicable model	Note
250	2500	32	Can be manufactured in increments of 1 mm up to the maximum length.
300		40	
		50	
		63	
		80	
		100	

* The rod length indicates the overall length of the rod.



* Rod is shipped together with the product.

* This product uses lithium-based grease (standard grease).

Mounting Brackets/Part Nos.

Bore size [mm]	32	40	50	63	80	100
Foot	25-MB-L03	25-MB-L04	25-MB-L05	25A-MWB-L06	25-MB-L08	25-MB-L10
Flange	25A-MWB-F03	25A-MWB-F04	25A-MWB-F05	25A-MWB-F06	MB-F08-XC7	MB-F10-XC7

* Order two foot brackets per lock unit.

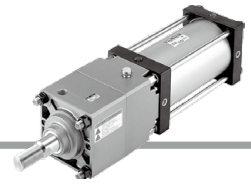
* Accessories for each mounting bracket are as follows.
Foot, Flange: Body mounting bolt

* The 25A- series specifications and dimensions are the same as those of the standard model.

For details, refer to the [Web Catalog](#).

Cylinder with Lock Double Acting, Single Rod 25A-CNS Series

ø125, ø140, ø160



How to Order

25A - C D NS L 125 - 300 - D - M9BW

Series compatible with secondary batteries

With auto switch

Nil	Without magnet for switch*1
D	With auto switch (Built-in magnet)

*1 In the case of without magnet for switch, auto switch cannot be mounted.

Mounting

B	Basic
L	Foot
F	Rod flange
G	Head flange
C	Single clevis
D	Double clevis
T	Center trunnion

Mounting brackets are assembled before shipping.

Bore size

125	125 mm
140	140 mm
160	160 mm

Port thread type

Nil	Rc
TN	NPT
TF	G

Number of auto switches

Nil	2
3	3
S	1
n	n

Auto switch

Nil	Without auto switch
-----	---------------------

* Refer to page 256 for applicable auto switch models.

Locking direction

D	Both directions
---	-----------------

Cylinder stroke [mm]

Bore size (mm)	Basic type, Head side flange type, Single clevis type, Double clevis type, Center trunnion type	Foot type, Rod side flange type
125, 140	Up to 1000	Up to 1400
160	Up to 1200	Up to 1400

Built-in Magnet Cylinder Model

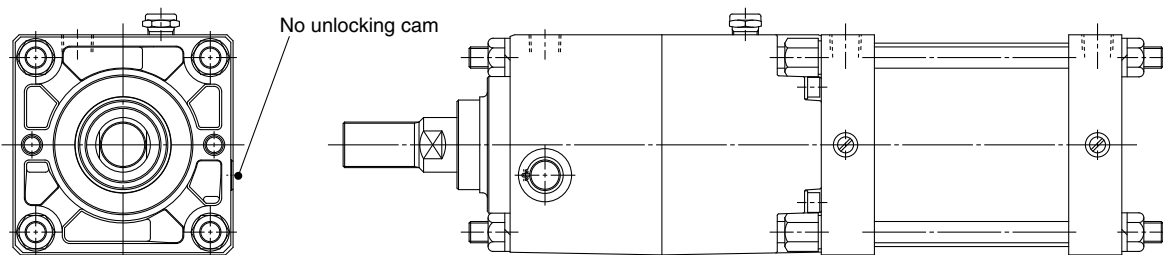
If a built-in magnet cylinder without auto switch is required, there is no need to enter the symbol for auto switch.

(Example) 25A-CDNSL140-100-D

* The 25A- series specifications and dimensions are the same as those of the standard model.

For details, refer to the **Web Catalog**.

⚠ There is no built-in unlocking cam.

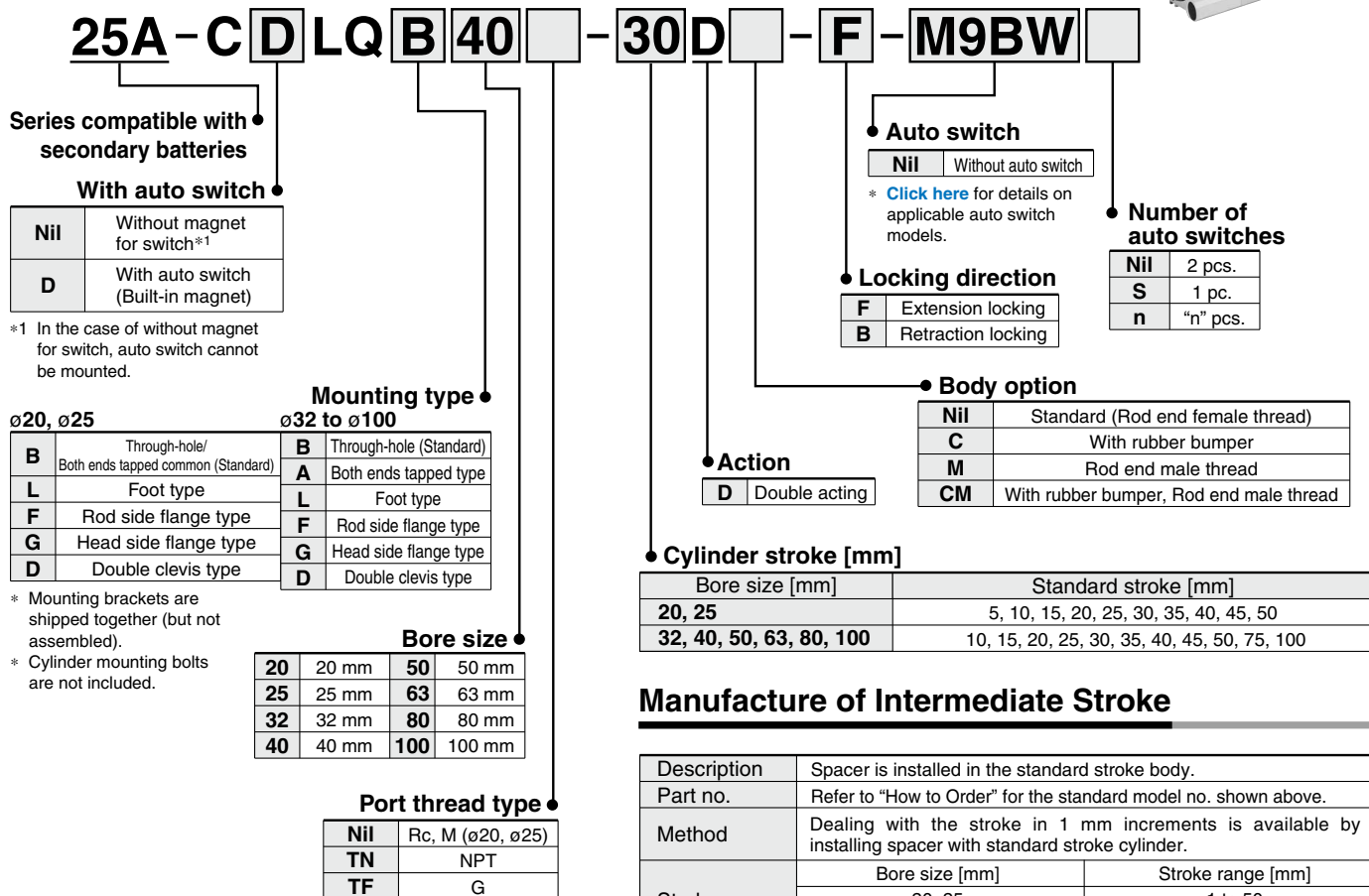


Compact Cylinder with Lock Double Acting, Single Rod 25A-CLQ Series

∅20, ∅25, ∅32, ∅40, ∅50, ∅63, ∅80, ∅100



How to Order



Cylinder stroke [mm]

Bore size [mm]	Standard stroke [mm]
20, 25	5, 10, 15, 20, 25, 30, 35, 40, 45, 50
32, 40, 50, 63, 80, 100	10, 15, 20, 25, 30, 35, 40, 45, 50, 75, 100

Manufacture of Intermediate Stroke

Description	Spacer is installed in the standard stroke body.	
Part no.	Refer to "How to Order" for the standard model no. shown above.	
Method	Dealing with the stroke in 1 mm increments is available by installing spacer with standard stroke cylinder.	
Stroke range	Bore size [mm]	Stroke range [mm]
	20, 25	1 to 50
	32, 40, 50, 63, 80, 100	1 to 100
Example	Part no.: CLQB40-47D-B 3 mm spacer is installed in standard cylinder CLQB40-50D-B. B dimension is 79.5 mm.	

* ∅40 to ∅100 bumper spacers with intermediate strokes can be manufactured in 5 mm increments from 55 to 95 mm.

Built-in Magnet Cylinder Model

If a built-in magnet cylinder without an auto switch is required, there is no need to enter the symbol for the auto switch.
(Example) 25A-CDLQL32-30D-B

* This product uses lithium-based grease (standard grease).

Mounting Bracket Part Nos. for the 25A- Series

Bore size [mm]	Foot	Flange	Double clevis
20	25A-CLQ-L020	25A-CLQ-F020	25A-CLQ-D020
25	25A-CLQ-L025	25A-CLQ-F025	25A-CLQ-D025
32	25A-CLQ-L032	25A-CLQ-F032	25A-CLQ-D032
40	25A-CLQ-L040	25A-CLQ-F040	25A-CLQ-D040
50	25A-CLQ-L050	25A-CLQ-F050	25A-CLQ-D050
63	25A-CLQ-L063	25A-CLQ-F063	25A-CLQ-D063
80	25A-CLQ-L080	25A-CLQ-F080	25A-CLQ-D080
100	25A-CLQ-L100	25A-CLQ-F100	25A-CLQ-D100

* When ordering foot bracket, order 2 pieces per cylinder.

* Parts belonging to each bracket are as follows. Foot, Flange: Body mounting screws, Double clevis: Clevis pin, type C retaining ring for shaft, Body mounting screws, Flat washer.

* The 25A- series specifications and dimensions are the same as those of the standard model.

For details, refer to the [Web Catalog](#).