

Speed Controller: Standard Type In-line Push Locking Type

Series AS



Lock speed setting, with the touch of a button

It can be locked only by pushing the handle after adjustment.

Convenient opening indication scale

The opening indication scale for the needle valve is provided on the handle to facilitate speed adjustments.

Easy speed control at low flow volume ranges

Possible to control the mass velocity

Constant handle constructed of metal to withstand heavy usage

In addition to the standard handle made of resin, a heavy-duty metal handle is also available.

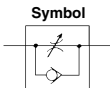
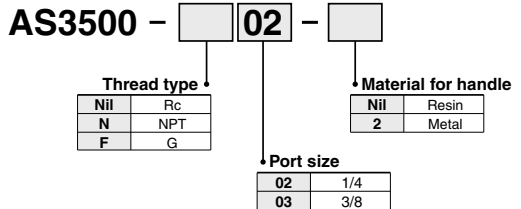
Retainer prevents an accidental loss of needle

Model/Specifications

Model	Resin handle	AS3500-02	AS3500-03
	Metal handle	AS3500-02-2	AS3500-03-2
Port size		1/4	3/8
Fluid		Air	
Proof pressure		1.5 MPa	
Max. operating pressure		1 MPa	
Min. operating pressure		0.05 MPa	
Ambient and fluid temperature		-5 to 60°C (No freezing)	
Weight		130 g (Metallic handle: 140 g)	
Free flow	Flow rate (L/min (ANR))	810	
	Sonic conductance dm ³ /(s·bar)	2.3	
	Critical pressure ratio	0.35	
Controlled flow	Flow rate (L/min (ANR))	810	
	Sonic conductance dm ³ /(s·bar)	2.3	
	Critical pressure ratio	0.2	



How to Order



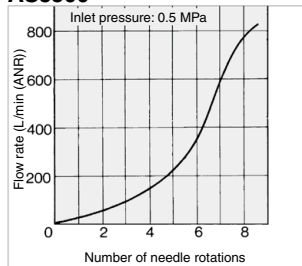
⚠ Caution

- Be sure to read before handling.
- Refer to front matter 56 for Safety Instructions and pages 468 to 471 for Flow Control Equipment Precautions.

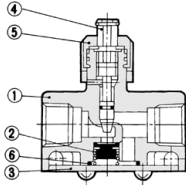
Needle Valve/ Flow Characteristics

Note) The flow characteristics are representative values.

AS3500



Construction



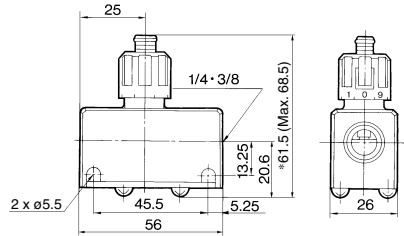
Component Parts

No.	Description	Material
1	Body	Aluminum alloy
2	Valve	NBR
3	Cap	Rolled steel
4	Needle	Brass
5	Handle	POM
		Zinc alloy

Replacement Parts

No.	Description	Material	Part no.
6	O-ring	NBR	14284

Dimensions



* Reference dimensions

AS
TMH
ASD
AS
AS-FE
KE
AS-FG
AS-FP
AS-FM
AS-D
AS-T
ASP
ASN
AQ
ASV
AK
VCHC
ASS
ASR
ASQ