


Series 10-/21-**CQ2** 11-/22-**CQ2**

Compact cylinder
 $\phi 12, \phi 16, \phi 20, \phi 25, \phi 32, \phi 40, \phi 50, \phi 63, \phi 80, \phi 100$

How to Order



Clean series

10	Relief type
11	Vacuum suction type

Mounting style

B	Through-hole (Standard)
---	-------------------------

Port thread type

Nil	M thread	$\phi 12$ to $\phi 25$
	Rc	
TN	NPT	$\phi 32$ to $\phi 100$
TF	G	

*For the cylinders without an auto switch, M threads are compatible only for $\phi 32$ with 5 strokes.

Auto switch mounting groove

Z	$\phi 12$ to $\phi 25$	2 sides
	$\phi 32$ to $\phi 100$	4 sides

Number of auto switches

Nil	2 pcs.
S	1 pc.
n	n pcs.

Without auto switch $\phi 12$ to $\phi 25$
 $\phi 12$ to $\phi 100$

10 - C Q 2 B 20 - 10 D

10 - C D Q 2 B 32 - 10 D Z - M9B

With auto switch

Nil	No	$\phi 32$ to $\phi 100$
D	With auto switch (Built-in magnet)	$\phi 12$ to $\phi 100$

Without auto switch $\phi 12$ to $\phi 25$
 $\phi 12$ to $\phi 100$

21 - C Q 2 B 20 - 10 D

21 - C D Q 2 B 32 - 10 D Z - M9B

Copper, fluorine and silicon-free + Low particle generation

21	Relief type
22	Vacuum suction type

With auto switch

Nil	No	$\phi 32$ to $\phi 100$
D	With auto switch (Built-in magnet)	$\phi 12$ to $\phi 100$

Cylinder stroke (mm)
 *For standard stroke, refer to the table below.

Action

D	Double acting
---	---------------

Rod end thread

Nil	Standard (Rod end female thread)
M	Rod end male thread
C	With rubber bumper

*Bore size $\phi 12$ cylinder with a switch comes with a rubber bumper as standard.

Type of auto switch (With auto switch)

Nil	Without auto switch (Built-in magnet cylinder)
-----	--

*For applicable auto switch part numbers, refer to the next page.
 *Auto switch is shipped together, (not assembled).

Model

	Model	Bore size (mm)	Port size	Relief port	Action	Standard stroke (mm)	
Relief type	10-/21-C(D)Q2B12	12	M5 x 0.8	M5 x 0.8	Double acting single rod	5, 10, 15, 20, 25, 30	
	10-/21-C(D)Q2B16	16				5, 10, 15, 20, 25, 30 35, 40, 45, 50	
	10-/21-C(D)Q2B20	20				5, 10, 15, 20, 25, 30 35, 40, 45, 50, 75, 100	
	10-/21-C(D)Q2B25	25					
	10-/21-C(D)Q2B32	32				M5 x 0.8, 1/8 (Note)	
	10-/21-C(D)Q2B40	40				1/8	
	10-/21-C(D)Q2B50	50				1/4	
	10-/21-C(D)Q2B63	63					10, 15, 20, 25, 30, 35 40, 45, 50, 75, 100
	10-/21-C(D)Q2B80	80				3/8	
	10-/21-C(D)Q2B100	100					
Vacuum suction type	11-/22-C(D)Q2B12	12	M5 x 0.8	M5 x 0.8	Double acting single rod	5, 10, 15, 20, 25, 30	
	11-/22-C(D)Q2B16	16				5, 10, 15, 20, 25, 30 35, 40, 45, 50	
	11-/22-C(D)Q2B20	20				5, 10, 15, 20, 25, 30 35, 40, 45, 50, 75, 100	
	11-/22-C(D)Q2B25	25					
	11-/22-C(D)Q2B32	32				M5 x 0.8, 1/8 (Note)	
	11-/22-C(D)Q2B40	40				1/8	
	11-/22-C(D)Q2B50	50				1/4	
	11-/22-C(D)Q2B63	63					10, 15, 20, 25, 30, 35 40, 45, 50, 75, 100
	11-/22-C(D)Q2B80	80				3/8	
	11-/22-C(D)Q2B100	100					

Note) Only 5 stroke comes with M5 x 0.8 in the case of no auto switch on $\phi 32$.

Specifications

Item	Bore size (mm)	12, 16, 20, 25 32, 40, 50, 63	80, 100
Proof pressure		1.5MPa	
Max. operating pressure		1.0MPa	
Min. operating pressure		0.1MPa	
Ambient and fluid temperature		Without auto switch : -10°C to 70°C With auto switch : -10°C to 60°C (With no condensation)	
Cushion		No	
Piston speed		30 to 400 mm/s	30 to 300 mm/s
Stroke length tolerance		$^{+1.0}_0$ (Note)	
Mounting		Through-hole	
Grease		10-/11-: Fluorine grease 21-/22-: Lithium soap base grease	
Particle generation grade (Refer to front matter pages 13 to 22 for details.)		10-/21-: Grade 2, 11-/22-: Grade 1	

Note) Stroke length tolerance does not include the amount of bumper change.

Suction flow rate of vacuum suction type (Reference values)

Size	Suction flow rate L/min (ANR)
12 to 40	5
50, 63	10
80, 100	20

Auto Switch Specifications (Refer to Best Pneumatics catalog for detailed specifications and auto switches not in the following table.)

Style	Auto switch part no.	Load voltage	Load current range	Indicator light	Application
Solid state switch	2-wire type	D-M9B	24 VDC (10 to 28VDC)	2.5 to 40mA	○ 24 VDC Relay, PLC
	3-wire type	D-M9N, D-M9P	28 VDC or less	40mA or less	○ IC circuit, Relay, PLC
Reed switch	D-A93, D-A96	24 VDC, 100 VAC	5 to 40mA, 5 to 20mA	○	Relay, PLC

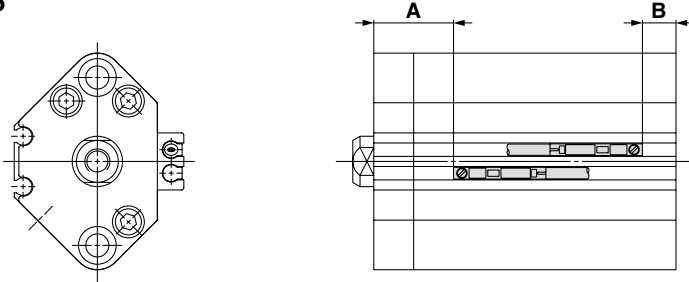
Refer to applicable auto switch list → Page 182.

PLC: Programmable Logic Controller

Auto switch/Proper mounting positions for stroke end detection

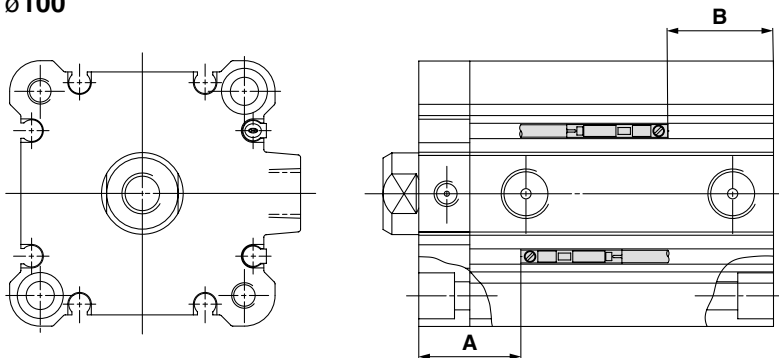
**D-M9N/M9B/M9P
D-M93/A96**

ø12 to ø25



**D-M9N/M9B/M9P
D-M93/A96**

ø32 to ø100



Bore size	D-M9□		D-A9□	
	A	B	A	B
12	16	7	12	3
16	19	6.5	15	2.5
20	19	7.5	15	3.5
25	19.5	8	15.5	4
32	22	9	18	5
40	26	11.5	22	7.5
50	24	14.5	20	10.5
63	26.5	17.5	22.5	13.5
80	34.5	22	30.5	18
100	39	27	35	23

⚠ Specific Product Precautions

Be sure to read before handling.

Snap Ring Installation/Removal (ø50 to ø100)

⚠ Caution

- For installation and removal, use an appropriate pair of pliers (tool for installing a type C snap ring).
- Even if a proper plier (tool for installing type C snap ring) is used, it is likely to inflict damage to a human body or peripheral equipment, as a snap ring may be flown out of the tip of a plier (tool for installing a type C snap ring). Be much careful with the popping of a snap ring. Besides, be certain that a snap ring is placed firmly into the groove of rod cover before supplying air at the time of installment.

Precautions

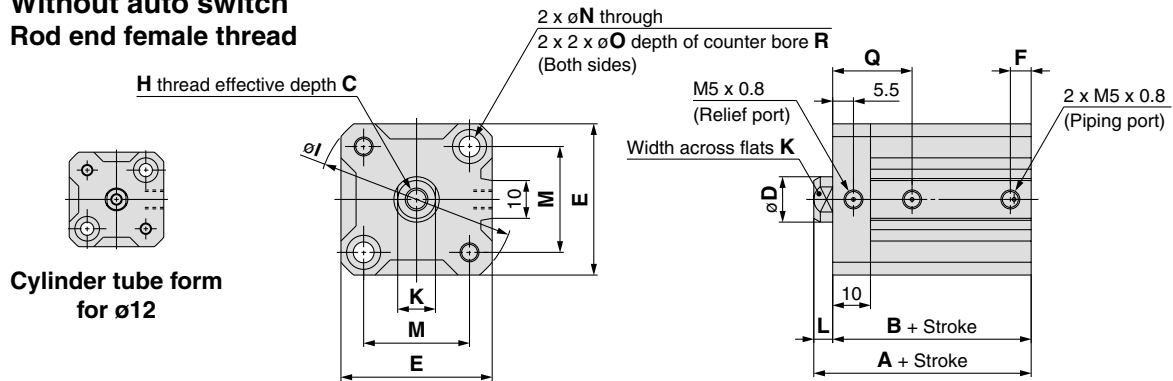
⚠ Caution

- Load to piston rod must always be in an axial direction.
 - When installing a cylinder, centering should be required accurately.
 - When using it as a stopper, install a guide or take some other measures to prevent lateral load from being directly applied to the piston rod.
- Do not loosen or remove the hexagon socket head cap screw securing the rod cover. It may cause the rod cover to be detached, resulting in human injury or damage to peripheral equipment.

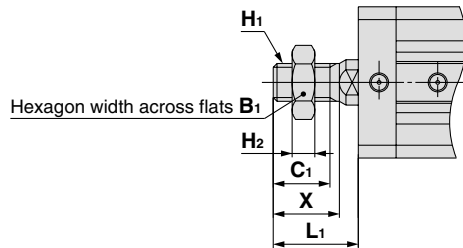
Compact cylinder 10-11-**CQ2/21-22-CQ2**

10-11-**C(D)Q2B12 to 25**, 21-22-**C(D)Q2B12 to 25**

Without auto switch
Rod end female thread



Rod end male thread



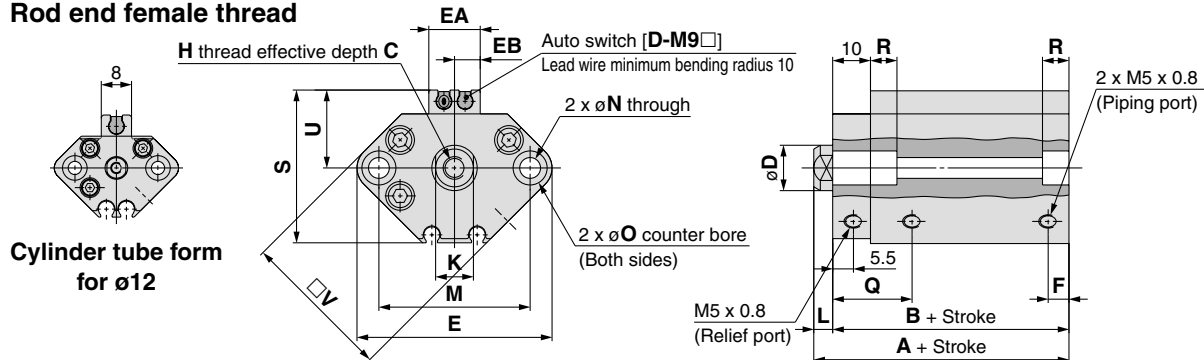
Rod end male thread (mm)

Bore size	B ₁	C ₁	H ₁	H ₂	L ₁	X
12	8	9	M5 x 0.8	4	14	10.5
16	10	10	M6 x 1.0	5	15.5	12
20	13	12	M8 x 1.25	5	18.5	14
25	17	15	M10 x 1.25	6	22.5	17.5

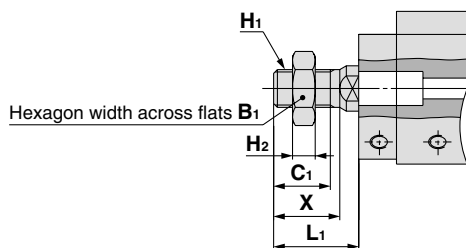
Standard (mm)

Symbol	A	B	C	D	E	F	H	I	K	L	M	N	O	Q	R	Standard stroke
Bore size 12	30.5	27	6	6	25	5	M3 x 0.5	32	5	3.5	15.5	3.5	6.5	17.5	3.5	5, 10, 15
16	32	28.5	8	8	29	5.5	M4 x 0.7	38	6	3.5	20	3.5	6.5	18	3.5	20, 25, 30
20	34	29.5	7	10	36	5.5	M5 x 0.8	47	8	4.5	25.5	5.5	9	19	7	5, 10, 15, 20, 25
25	37.5	32.5	12	12	40	5.5	M6 x 1.0	52	10	5	28	5.5	9	21	7	30, 35, 40, 45, 50

With Auto Switch
Rod end female thread



Rod end male thread



Rod end male thread (mm)

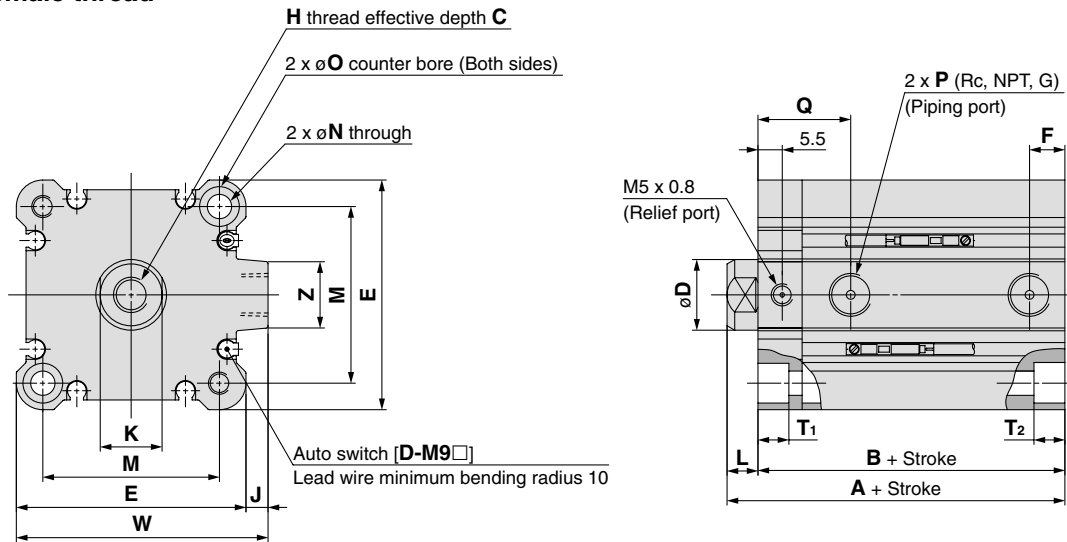
Bore size	B ₁	C ₁	H ₁	H ₂	L ₁	X
12	8	9	M5 x 0.8	4	14	10.5
16	10	10	M6 x 1.0	5	15.5	12
20	13	12	M8 x 1.25	5	18.5	14
25	17	15	M10 x 1.25	6	22.5	17.5

Standard (mm)

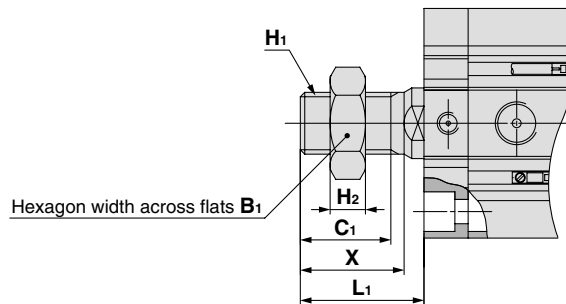
Symbol	A	B	C	D	E	EA	EB	F	H	K	L	M	N	O	Q	R	S	U	V	Standard stroke
Bore size 12	41.5	38	6	6	33	—	—	6.5	M3	5	3.5	22	3.5	6.5	21	3.5	27.5	14	25	5, 10, 15
16	44	40.5	8	8	37	13.2	6.6	5.5	M4	6	3.5	28	3.5	6.5	20	3.5	29.5	15	29	20, 25, 30
20	46	41.5	7	10	47	13.6	6.8	5.5	M5	8	4.5	36	5.5	9	20.5	7	35.5	18	36	5, 10, 15, 20, 25
25	47.5	42.5	12	12	52	13.6	6.8	5.5	M6	10	5	40	5.5	9	21	7	40.5	21	40	30, 35, 40, 45, 50

10-11-C(D)Q2B32 to 50, 21-22-C(D)Q2B32 to 50 (Only the A, B, F, P and Q dimensions will change in (models/units) without auto switches. Please refer to the dimension chart.)

Rod end female thread



Rod end male thread



Rod end male thread (mm)

Bore size	B ₁	C ₁	H ₁	H ₂	L ₁	X
32	22	20.5	M14 x 1.5	8	28.5	23.5
40	22	20.5	M14 x 1.5	8	28.5	23.5
50	27	26	M18 x 1.5	11	33.5	28.5

Standard

Bore size	Stroke range ^{Note)}	Without auto switch					With auto switch					C	D	E	H	J	K
		A	B	F	P	Q	A	B	F	P	Q						
32	5	40	33	5.5	M5 x 0.8	21.5	50	43	7.5	1/8	20.5	13	16	45	M8 x 1.25	4.5	14
	10 to 50			7.5	1/8	20.5											
	75, 100	50	43	8	1/8	21	56.5	49.5	8	1/8	21	13	16	52	M8 x 1.25	5	14
5 to 50	46.5	39.5															
40	75, 100	56.5	49.5	10.5	1/4	20.5	58.5	50.5	10.5	1/4	20.5	15	20	64	M10 x 1.5	7	17
	10 to 50	48.5	40.5														
50	75, 100	58.5	50.5														

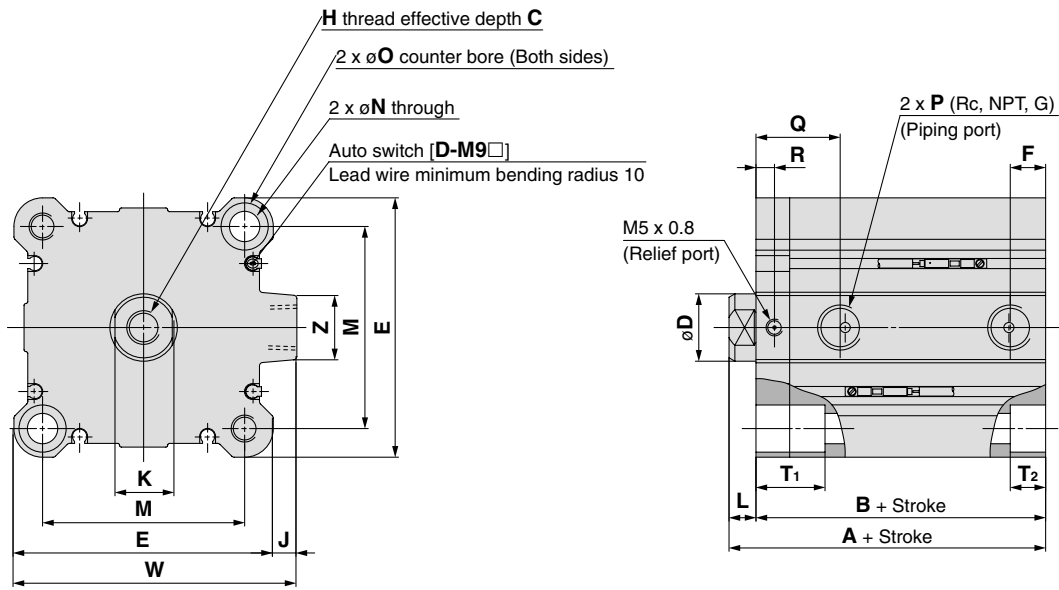
Bore size	Stroke range ^{Note)}	L	M	N	O	T ₁	T ₂	W	Z
32	5	7	34	5.5	9	7	7	49.5	14
	10 to 50								
	75, 100								
40	5 to 50	7	40	5.5	9	6	7	57	15
	75, 100								
50	10 to 50	8	50	6.6	11	18	8	71	19
	75, 100								

Note) A spacer of 20, 15, 10 or 5 mm is attached to 75 or 100 stroke to make an intermediate stroke (55, 60, 65, 70 and 80, 85, 90, 95). Therefore the same dimensions as the 75 or 100 mm stroke can be obtained.

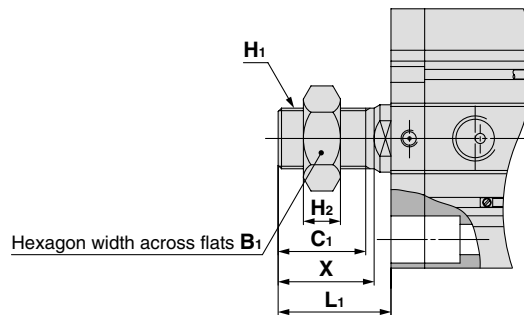
Compact cylinder 10-11-CQ2/21-22-CQ2

10-11-C(D)Q2B63 to 100, 21-22-C(D)Q2B63 to 100 (Only the A and B dimensions will change in (models/units) without auto switches. Please refer to the dimension chart.)

Rod end female thread



Rod end male thread



Rod end male thread (mm)

Bore size	B ₁	C ₁	H ₁	H ₂	L ₁	X
63	27	26	M18 x 1.5	11	33.5	28.5
80	32	32.5	M22 x 1.5	13	43.5	35.5
100	41	32.5	M26 x 1.5	16	43.5	35.5

Standard

Bore size	Stroke range ^{Note)}	Without auto switch		With auto switch		C	D	E	F	H	J	K	L	M	N	O	P	Q
		A	B	A	B													
63	10 to 50	54	46	64	56	15	20	77	10.5	M10 x 1.5	7	17	8	60	9	14	1/4	25
	75, 100	64	56															
80	10 to 50	68.5	58.5	78.5	68.5	21	25	98	12.5	M16 x 2.0	6	22	10	77	11	17.5	3/8	31
	75, 100	78.5	68.5															
100	10 to 50	80	68	90	78	27	30	117	13	M20 x 2.5	6.5	27	12	94	11	17.5	3/8	38
	75, 100	90	78															

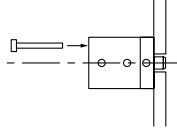
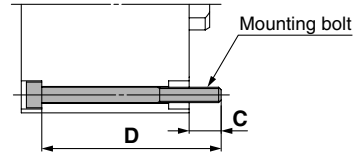
Bore size	Stroke range ^{Note)}	R	T ₁	T ₂	W	Z
63	10 to 50	5.5	20.5	10.5	84	19
	75, 100					
80	10 to 50	10	28.5	13.5	104	25
	75, 100					
100	10 to 50	10	28.5	13.5	123.5	25
	75, 100					

Note) A spacer of 20, 15, 10 or 5 mm is attached to 75 or 100 stroke to make an intermediate stroke (55, 60, 65, 70 and 80, 85, 90, 95). Therefore the same dimensions as the 75 or 100 mm stroke can be obtained.

CQ2 Mounting bolt

Mounting: Special long bolt for through-hole mounting is available as option.
Refer to the following for how to order.
Order number of bolts.

Example) CQ-M5X40L 2 pieces



Rod side mounting / Without auto switch

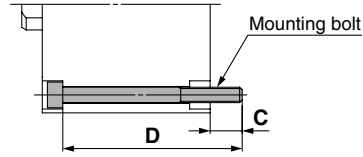
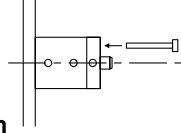
Model		C	D	Mounting bolt
10-	11-	6.5	CQ2B12-5D	35 CQ-M3X35L
			-10D	40 X40L
			-15D	45 X45L
			-20D	50 X50L
			-25D	55 X55L
			-30D	60 X60L
10-	11-	5	CQ2B16-5D	35 CQ-M3X35L
			-10D	40 X40L
			-15D	45 X45L
			-20D	50 X50L
			-25D	55 X55L
			-30D	60 X60L
10-	11-	7.5	CQ2B20-5D	35 CQ-M5X35L
			-10D	40 X40L
			-15D	45 X45L
			-20D	50 X50L
			-25D	55 X55L
			-30D	60 X60L
			-35D	65 X65L
			-40D	70 X70L
			-45D	75 X75L
			-50D	80 X80L
10-	11-	9.5	CQ2B25-5D	40 CQ-M5X40L
			-10D	45 X45L
			-15D	50 X50L
			-20D	55 X55L
			-25D	60 X60L
			-30D	65 X65L
			-35D	70 X70L
			-40D	75 X75L
			-45D	80 X80L
			-50D	85 X85L
10-21-	11-22-	9	CQ2B32-5DZ	40 CQ-M5X40L
			-10DZ	45 X45L
			-15DZ	50 X50L
			-20DZ	55 X55L
			-25DZ	60 X60L
			-30DZ	65 X65L
			-35DZ	70 X70L
			-40DZ	75 X75L
			-45DZ	80 X80L
			-50DZ	85 X85L
10-21-	11-22-	7.5	CQ2B40-5DZ	45 CQ-M5X45L
			-10DZ	50 X50L
			-15DZ	55 X55L
			-20DZ	60 X60L
			-25DZ	65 X65L
			-30DZ	70 X70L
			-35DZ	75 X75L
			-40DZ	80 X80L
			-45DZ	85 X85L
			-50DZ	90 X90L
			-75DZ	125 X125L
			-100DZ	150 X150L

Model		C	D	Mounting bolt
10-21-	11-22-	12.5	CQ2B50-10DZ	55 CQ-M6X55L
			-15DZ	60 X60L
			-20DZ	65 X65L
			-25DZ	70 X70L
			-30DZ	75 X75L
			-35DZ	80 X80L
			-40DZ	85 X85L
			-45DZ	90 X90L
			-50DZ	95 X95L
			-75DZ	130 X130L
-100DZ	155 X155L			
10-21-	11-22-	14.5	CQ2B63-10DZ	60 CQ-M8X60L
			-15DZ	65 X65L
			-20DZ	70 X70L
			-25DZ	75 X75L
			-30DZ	80 X80L
			-35DZ	85 X85L
			-40DZ	90 X90L
			-45DZ	95 X95L
			-50DZ	100 X100L
			-75DZ	135 X135L
-100DZ	160 X160L			
10-21-	11-22-	15	CQ2B80-10DZ	70 CQ-M10X70L
			-15DZ	75 X75L
			-20DZ	80 X80L
			-25DZ	85 X85L
			-30DZ	90 X90L
			-35DZ	95 X95L
			-40DZ	100 X100L
			-45DZ	105 X105L
			-50DZ	110 X110L
			-75DZ	145 X145L
-100DZ	170 X170L			
10-21-	11-22-	15.5	CQ2B100-10DZ	80 CQ-M10X80L
			-15DZ	85 X85L
			-20DZ	90 X90L
			-25DZ	95 X95L
			-30DZ	100 X100L
			-35DZ	105 X105L
			-40DZ	110 X110L
			-45DZ	115 X115L
			-50DZ	120 X120L
			-75DZ	155 X155L
-100DZ	180 X180L			

CQ2 Mounting bolt

Mounting: Special long bolt for through-hole mounting is available as option.
Refer to the following for how to order.
Order number of bolts.

Example) CQ-M5X40L 2 pieces



Head side mounting / Without auto switch

Model		C	D	Mounting bolt
10-	11-	6.5	CQ2B12-5D	35 CQ-M3X35L
			-10D	40 X40L
			-15D	45 X45L
			-20D	50 X50L
			-25D	55 X55L
			-30D	60 X60L
10-	11-	5	CQ2B16-5D	35 CQ-M3X35L
			-10D	40 X40L
			-15D	45 X45L
			-20D	50 X50L
			-25D	55 X55L
			-30D	60 X60L
10-	11-	7.5	CQ2B20-5D	35 CQ-M5X35L
			-10D	40 X40L
			-15D	45 X45L
			-20D	50 X50L
			-25D	55 X55L
			-30D	60 X60L
			-35D	65 X65L
			-40D	70 X70L
			-45D	75 X75L
			-50D	80 X80L
10-	11-	9.5	CQ2B25-5D	40 CQ-M5X40L
			-10D	45 X45L
			-15D	50 X50L
			-20D	55 X55L
			-25D	60 X60L
			-30D	65 X65L
			-35D	70 X70L
			-40D	75 X75L
			-45D	80 X80L
			-50D	85 X85L
10-21-	11-22-	9	CQ2B32-5DZ	40 CQ-M5X40L
			-10DZ	45 X45L
			-15DZ	50 X50L
			-20DZ	55 X55L
			-25DZ	60 X60L
			-30DZ	65 X65L
			-35DZ	70 X70L
			-40DZ	75 X75L
			-45DZ	80 X80L
			-50DZ	85 X85L
10-21-	11-22-	11.5	CQ2B40-5DZ	50 CQ-M5X50L
			-10DZ	55 X55L
			-15DZ	60 X60L
			-20DZ	65 X65L
			-25DZ	70 X70L
			-30DZ	75 X75L
			-35DZ	80 X80L
			-40DZ	85 X85L
			-45DZ	90 X90L
			-50DZ	95 X95L
			-75DZ	130 X130L
			-100DZ	155 X155L

Model		C	D	Mounting bolt
10-21-	11-22-	12.5	CQ2B50-10DZ	45 CQ-M6X45L
			-15DZ	50 X50L
			-20DZ	55 X55L
			-25DZ	60 X60L
			-30DZ	65 X65L
			-35DZ	70 X70L
			-40DZ	75 X75L
			-45DZ	80 X80L
			-50DZ	85 X85L
			-75DZ	120 X120L
10-21-	11-22-	14.5	CQ2B63-10DZ	50 CQ-M8X50L
			-15DZ	55 X55L
			-20DZ	60 X60L
			-25DZ	65 X65L
			-30DZ	70 X70L
			-35DZ	75 X75L
			-40DZ	80 X80L
			-45DZ	85 X85L
			-50DZ	90 X90L
			-75DZ	125 X125L
10-21-	11-22-	15	CQ2B80-10DZ	55 CQ-M10X55L
			-15DZ	60 X60L
			-20DZ	65 X65L
			-25DZ	70 X70L
			-30DZ	75 X75L
			-35DZ	80 X80L
			-40DZ	85 X85L
			-45DZ	90 X90L
			-50DZ	95 X95L
			-75DZ	130 X130L
10-21-	11-22-	15.5	CQ2B100-10DZ	65 CQ-M10X65L
			-15DZ	70 X70L
			-20DZ	75 X75L
			-25DZ	80 X80L
			-30DZ	85 X85L
			-35DZ	90 X90L
			-40DZ	95 X95L
			-45DZ	100 X100L
			-50DZ	105 X105L
			-75DZ	140 X140L
-100DZ	165 X165L			

Air cylinder

Rotary actuator

Air gripper

Directional control valve

Flow control equipment

Filter, Pressure control equipment

Fittings & Tubing

Air preparation equipment

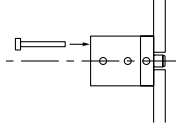
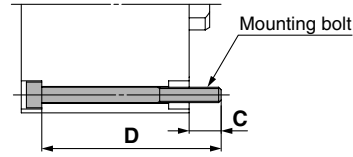
Pressure switch

Clean gas filter

CDQ2 Mounting bolt

Mounting: Special long bolt for through-hole mounting is available as option.
Refer to the following for how to order.
Order number of bolts.

Example) CQ-M5X50L 2 pieces



Rod side mounting / With auto switch

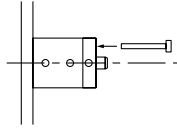
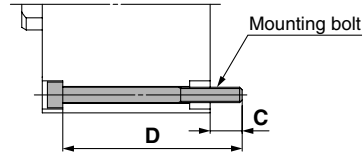
Model		C	D	Mounting bolt
10-	11-	5.5	CDQ2B12-5DCZ	45 CQ-M3X45L
			-10DCZ	50 X50L
			-15DCZ	55 X55L
			-20DCZ	60 X60L
			-25DCZ	65 X65L
			-30DCZ	70 X70L
10-	11-	8	CDQ2B16-5DZ	50 CQ-M3X50L
			-10DZ	55 X55L
			-15DZ	60 X60L
			-20DZ	65 X65L
			-25DZ	70 X70L
			-30DZ	75 X75L
10-	11-	10.5	CDQ2B20-5DZ	50 CQ-M5X50L
			-10DZ	55 X55L
			-15DZ	60 X60L
			-20DZ	65 X65L
			-25DZ	70 X70L
			-30DZ	75 X75L
			-35DZ	80 X80L
			-40DZ	85 X85L
			-45DZ	90 X90L
			-50DZ	95 X95L
10-	11-	9.5	CDQ2B25-5DZ	50 CQ-M5X50L
			-10DZ	55 X55L
			-15DZ	60 X60L
			-20DZ	65 X65L
			-25DZ	70 X70L
			-30DZ	75 X75L
			-35DZ	80 X80L
			-40DZ	85 X85L
			-45DZ	90 X90L
			-50DZ	95 X95L
10-21-	11-22-	9	CDQ2B32-5DZ	50 CQ-M5X50L
			-10DZ	55 X55L
			-15DZ	60 X60L
			-20DZ	65 X65L
			-25DZ	70 X70L
			-30DZ	75 X75L
			-35DZ	80 X80L
			-40DZ	85 X85L
			-45DZ	90 X90L
			-50DZ	95 X95L
10-21-	11-22-	7.5	CDQ2B40-5DZ	55 CQ-M5X55L
			-10DZ	60 X60L
			-15DZ	65 X65L
			-20DZ	70 X70L
			-25DZ	75 X75L
			-30DZ	80 X80L
			-35DZ	85 X85L
			-40DZ	90 X90L
			-45DZ	95 X95L
			-50DZ	100 X100L
			-75DZ	125 X125L
			-100DZ	150 X150L

Model		C	D	Mounting bolt
10-21-	11-22-	12.5	CDQ2B50-10DZ	65 CQ-M6X65L
			-15DZ	70 X70L
			-20DZ	75 X75L
			-25DZ	80 X80L
			-30DZ	85 X85L
			-35DZ	90 X90L
			-40DZ	95 X95L
			-45DZ	100 X100L
			-50DZ	105 X105L
			-75DZ	130 X130L
10-21-	11-22-	14.5	CDQ2B63-10DZ	70 CQ-M8X70L
			-15DZ	75 X75L
			-20DZ	80 X80L
			-25DZ	85 X85L
			-30DZ	90 X90L
			-35DZ	95 X95L
			-40DZ	100 X100L
			-45DZ	105 X105L
			-50DZ	110 X110L
			-75DZ	135 X135L
10-21-	11-22-	15	CDQ2B80-10DZ	80 CQ-M10X80L
			-15DZ	85 X85L
			-20DZ	90 X90L
			-25DZ	95 X95L
			-30DZ	100 X100L
			-35DZ	105 X105L
			-40DZ	110 X110L
			-45DZ	115 X115L
			-50DZ	120 X120L
			-75DZ	145 X145L
10-21-	11-22-	15.5	CDQ2B100-10DZ	90 CQ-M10X90L
			-15DZ	95 X95L
			-20DZ	100 X100L
			-25DZ	105 X105L
			-30DZ	110 X110L
			-35DZ	115 X115L
			-40DZ	120 X120L
			-45DZ	125 X125L
			-50DZ	130 X130L
			-75DZ	155 X155L
-100DZ	180 X180L			

CDQ2 Mounting bolt

Mounting: Special long bolt for through-hole mounting is available as option. Refer to the following for how to order. Order number of bolts.

Example) CQ-M5X50L 2 pieces



Head side mounting / Without auto switch

Model		C	D	Mounting bolt
10-	11-	5.5	CDQ2B12-5DCZ	35 CQ-M3X35L
			-10DCZ	40 X40L
			-15DCZ	45 X45L
			-20DCZ	50 X50L
			-25DCZ	55 X55L
			-30DCZ	60 X60L
10-	11-	8	CDQ2B16-5DZ	40 CQ-M3X40L
			-10DZ	45 X45L
			-15DZ	50 X50L
			-20DZ	55 X55L
			-25DZ	60 X60L
			-30DZ	65 X65L
10-	11-	10.5	CDQ2B20-5DZ	40 CQ-M5X40L
			-10DZ	45 X45L
			-15DZ	50 X50L
			-20DZ	55 X55L
			-25DZ	60 X60L
			-30DZ	65 X65L
			-35DZ	70 X70L
			-40DZ	75 X75L
			-45DZ	80 X80L
			-50DZ	85 X85L
10-	11-	9.5	CDQ2B25-5DZ	40 CQ-M5X40L
			-10DZ	45 X45L
			-15DZ	50 X50L
			-20DZ	55 X55L
			-25DZ	60 X60L
			-30DZ	65 X65L
			-35DZ	70 X70L
			-40DZ	75 X75L
			-45DZ	80 X80L
			-50DZ	85 X85L
10-21-	11-22-	9	CDQ2B32-5DZ	50 CQ-M5X50L
			-10DZ	55 X55L
			-15DZ	60 X60L
			-20DZ	65 X65L
			-25DZ	70 X70L
			-30DZ	75 X75L
			-35DZ	80 X80L
			-40DZ	85 X85L
			-45DZ	90 X90L
			-50DZ	95 X95L
10-21-	11-22-	11.5	CDQ2B40-5DZ	60 CQ-M5X60L
			-10DZ	65 X65L
			-15DZ	70 X70L
			-20DZ	75 X75L
			-25DZ	80 X80L
			-30DZ	85 X85L
			-35DZ	90 X90L
			-40DZ	95 X95L
			-45DZ	100 X100L
			-50DZ	105 X105L
			-75DZ	130 X130L
			-100DZ	155 X155L

Model		C	D	Mounting bolt
10-21-	11-22-	12.5	CDQ2B50-10DZ	55 CQ-M6X55L
			-15DZ	60 X60L
			-20DZ	65 X65L
			-25DZ	70 X70L
			-30DZ	75 X75L
			-35DZ	80 X80L
			-40DZ	85 X85L
			-45DZ	90 X90L
			-50DZ	95 X95L
			-75DZ	120 X120L
10-21-	11-22-	14.5	CDQ2B63-10DZ	60 CQ-M8X60L
			-15DZ	65 X65L
			-20DZ	70 X70L
			-25DZ	75 X75L
			-30DZ	80 X80L
			-35DZ	85 X85L
			-40DZ	90 X90L
			-45DZ	95 X95L
			-50DZ	100 X100L
			-75DZ	125 X125L
10-21-	11-22-	15	CDQ2B80-10DZ	65 CQ-M10X65L
			-15DZ	70 X70L
			-20DZ	75 X75L
			-25DZ	80 X80L
			-30DZ	85 X85L
			-35DZ	90 X90L
			-40DZ	95 X95L
			-45DZ	100 X100L
			-50DZ	105 X105L
			-75DZ	130 X130L
10-21-	11-22-	15.5	CDQ2B100-10DZ	75 CQ-M10X75L
			-15DZ	80 X80L
			-20DZ	85 X85L
			-25DZ	90 X90L
			-30DZ	95 X95L
			-35DZ	100 X100L
			-40DZ	105 X105L
			-45DZ	110 X110L
			-50DZ	115 X115L
			-75DZ	140 X140L
-100DZ	165 X165L			

Air cylinder

Rotary actuator

Air gripper

Directional control valve

Flow control equipment

Filter, Pressure control equipment

Fittings & Tubing

Air preparation equipment

Pressure switch

Clean gas filter